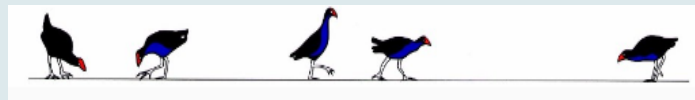


# Clayton Bay Urban Biodiversity Street Tree Replacement Project

Alexandrina Council Community  
Environment Grant 17/18



CBCAI



# The problem

Increasing spread of woody wattle throughout  
Clayton Bay township and beyond

*Acacia saligna* – Golden wreath wattle is a **woody weed** from South West WA

- produces masses of viable seed that germinate readily.
- has a very deep taproot, and thrives so well that it dominates the landscape
- reduces diversity of habitat
- poses a **major fire** risk to Clayton Bay, and is spreading rapidly to the north of the town.

# Woody weed

*Acacia saligna* Golden wreath wattle



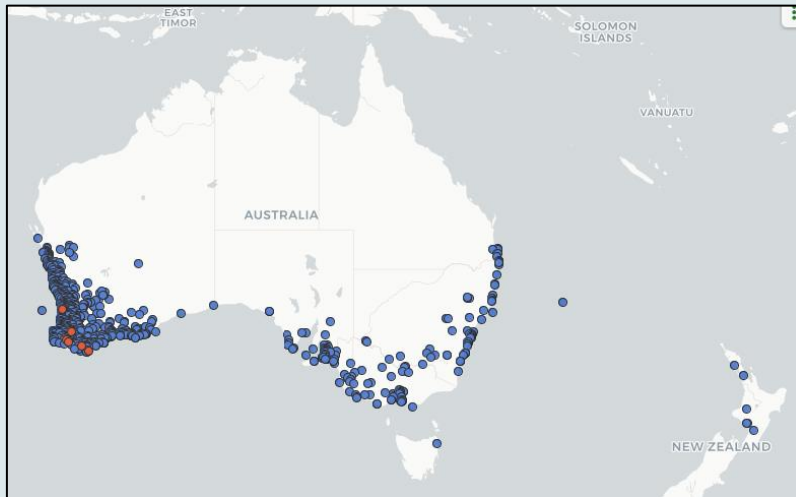
# *Acacia saligna*

## Distribution – not just Clayton Bay

*Acacia saligna*, native to SW WA, has spread across a wide area of Southern Australia, and has become a woody weed in large areas of South East Australia.

In South Australia it is ***invading bushland***, particularly in the Greater Adelaide Region and in the south-eastern corner of the state. It also appears on several local environmental weed lists in this state .

**Planted in Clayton in the 1960's on advice from Dept. Ag, this is now a problem woody weed in Clayton Bay**



# Community Environment Grant 17/18

The **purpose of the grant** is to:



‘support the community in achieving local environmental outcomes which foster environmental stewardship & demonstrates strong links with one or more goals, strategies or actions contained in Council’s Environmental Action Plan 2014 -2018’





**Alexandrina Council**  
**Environmental Action Plan**  
2014–2018

THRIVE IN CLEAN GREEN FUTURES



## Enhancing biodiversity

### Strategy 2.4: Improve urban biodiversity

**2.4.4** Continue to increase plantings of local native species in streetscapes as well as Level A and B parks and gardens

**2.4.6** Seek opportunities to collaborate with the CFS, NRM Boards, other government agencies and community groups to reduce township fire risk by removing woody weeds and revegetating with indigenous plants.

# Project Description

This is a joint initiative between CBNEG & CBCAI

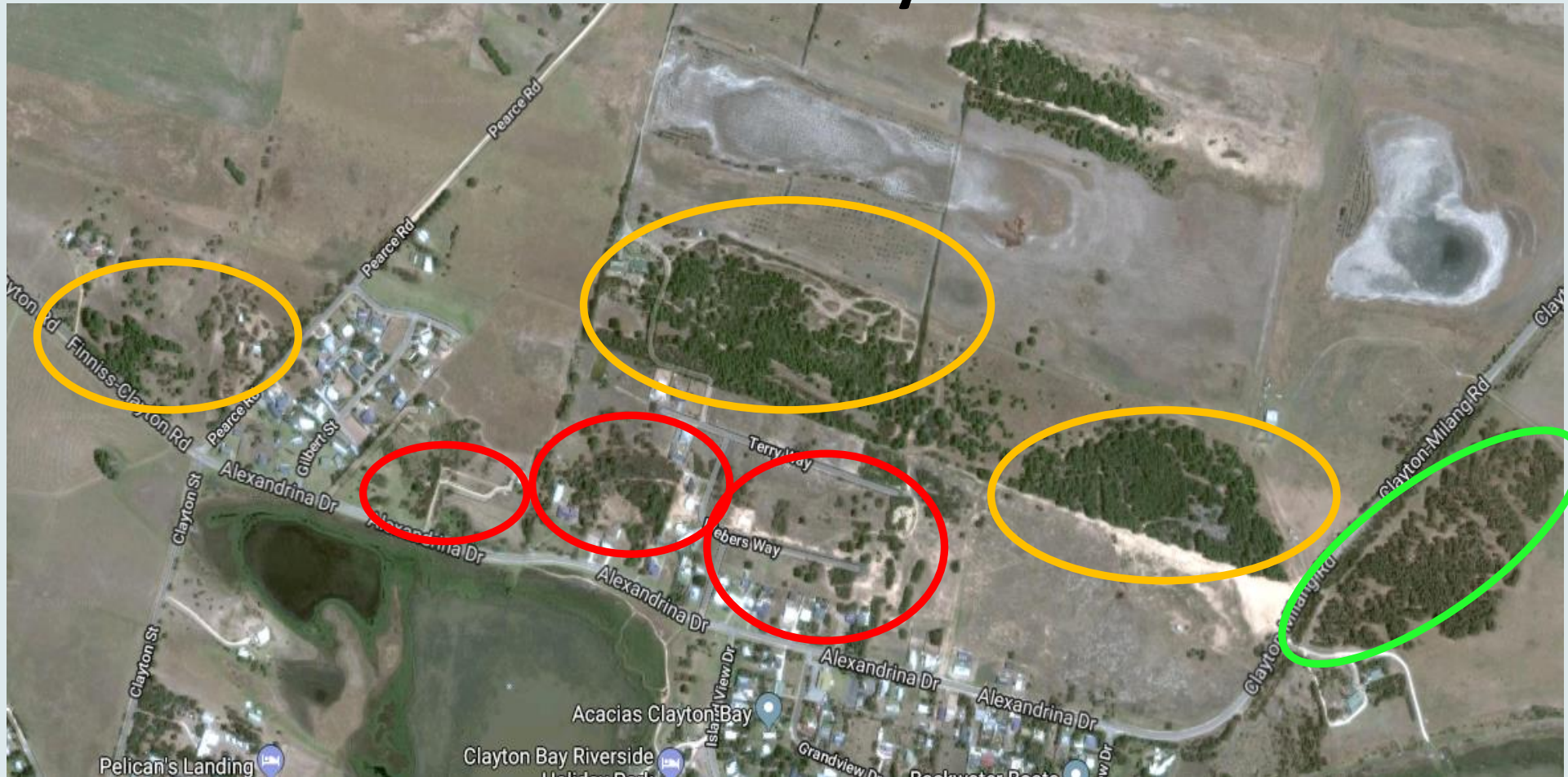
The removal of woody weeds targeting *Acacia saligna* from verges in Bayview Rd & replacing with locally suited species grown at the Clayton community nursery

Outcomes anticipated:

- Improve streetscape & enhance urban biodiversity
- Become demonstration model for residents to remove woody weeds & replace with suitable species
- Educate residents on woody weed recognition & control methods
- Reduction of fire threat into the future

# Clayton Bay WOODY WEEDS

## the 'estates' & beyond north



**\*Acacia saligna**  
Golden wreath wattle

**\*Pinus halapensis –**  
Allepo pine

**Revegetation-**  
Broadoak

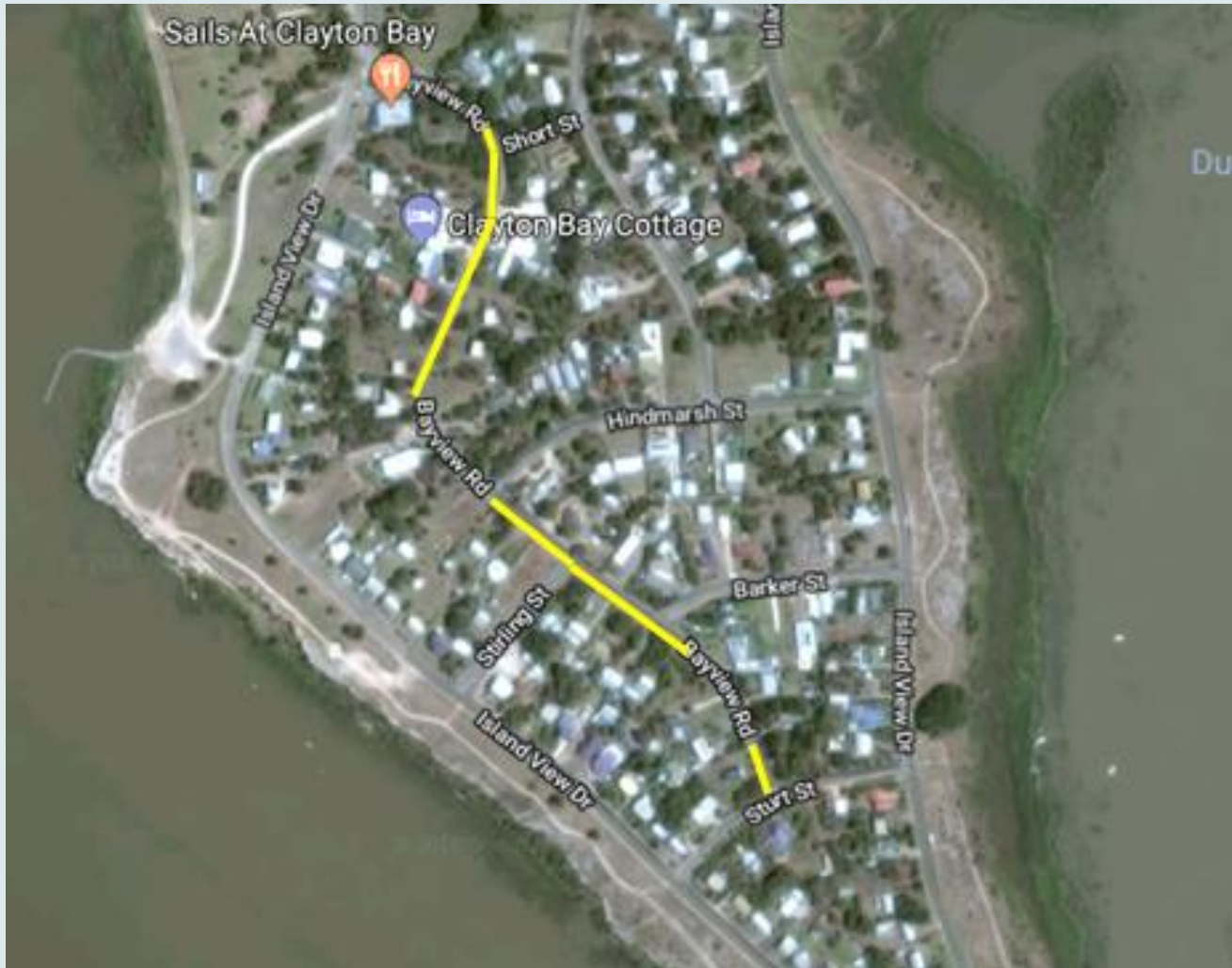




## Revegetation Clayton Bay 2003 – 2017

This includes the removal of all woody weeds from the foreshore through the Federal Government CLLMM revegetation project 2010 – 2016

Ongoing removal of germinates continues



# Bayview Road

## 'Demonstration Project' site

Estimated completion date August 2018

Watering summer 2018 as required (CBNEG & residents)

Removal of germinates will be ongoing (CBNEG & residents)

Bayview Rd was chosen for its manageable size and use by residents and through traffic

# Project schedule

TASK	WHEN	WHO	VOLUNTEER HOURS
Prepare information sheets re 'project' weeds	October 2017	CBCAI/CBNEG	10
Prepare plant species information sheets	October 2017	Nursery Manager	4
Obtain Council approval – P & G & Environment Dept. for info sheets	November 2017	CBCAI/CBNEG	
Start information sharing – Facebook	December 2017	CBCAI/CBNEG	
Consult adjacent landholders – project information, replacement species information	Summer 2017 -2018	CBCAI/CBNEG	2
Inform adjacent landholders of schedule	Summer 2017-2018	CBCAI/CBNEG	
Propagate & pot on plants	NOW (completed)	Nursery Manager / Volunteers	2
Remove large & medium trees	Not seeding time	Contractor	
Herbicide to stumps	As trees are removed	Contractor / Volunteers	
Remove smaller trees & seedlings	Throughout the year	Volunteers	10
Herbicide to stems	Throughout the year	Volunteers	
Mulching medium and smaller branches & leaves	At time of removal	Contractor	
Remove larger wood – stockpile at Council's Pt Sturt Rd for bonfire June 2018	At time of removal	Volunteers / Contractor	8
Transport mulch to foreshore sites as directed	At time of mulching	Contractor / Volunteers	
Prepare sites – herbicide as required	Autumn 2018	Volunteers	3
Planting, stakes & corflute guards, water in	July 2018	Volunteers	3
Follow up with adjacent landholders	Completion of planting	CBCAI/CBNEG	1
Follow up weed control - germinates	Ongoing	Volunteers / adjacent residents	6
Watering – summer 2018 -2019	As needed	Volunteers / adjacent residents	
18/8/2017			49 hrs

# Grant Value

\$5291.00 – Total value of project

\$2571.00 – payment to CBNEG

- Purchase of tools & equipment
- Purchase of plants

\$2720.00 – in-kind support Council

- Removal of trees
- Mulching of trees

49 Volunteer hours estimated



# *Acacia saligna*

## Golden wreath wattle

### Habit

An upright (i.e. erect) and spreading shrub or small tree usually growing 2-6 m tall, occasionally reaching 10 m in height. It is relatively short-lived with a life-span of only 10-20 years.

### Distinguishing Features

- A shrub or small tree with simple 'leaves' - **green or bluish-green** colour
- younger branches and 'leaves' are drooping in nature.
- its relatively narrow '**leaves**' (usually 7-30 cm long and 2-20 mm wide) are either **straight or sickle-shaped**.
- golden-yellow **flowers** in small **globular clusters** (7-12 mm across) that are arranged into larger elongated compound clusters.
- its elongated and flattened **Pods** (50-140 mm long and only 4-6 mm wide) are slightly **constricted** between each of the seeds
- **Suckers** from the roots

# How to recognise *the Acacia saligna*



- a. **Leaves** have strong central vein with swollen glands at base of leaf
- b. **Flowers** bright yellow arranged in small globular clusters OCTOBER
- c. **Fruit** is a narrow and elongated pod (these immature)
- d. **Seeds** are dark brown or black, oblong or oval & shiny in appearance

# May be confused with .....

There are two wattle species planted and flowering around the foreshore trail *Acacia pycnantha* (Golden wattle) & *Acacia longifolia* var. *sophorae* (Coastal wattle). These are local species to this area.



**1** *Acacia pycnantha* – **most easily** confused with *Acacia saligna* both with prominent central vein. Flowers JULY to SEPT. **Does not sucker** ✓

**2** *Acacia longifolia* var. *sophorae* – different leaf vein pattern & flower shape. Easy to identify. **Does not sucker** ✓



# Controlling *Acacia saligna*

- **Hand pull** out germinates when very young if possible
- Hand pulling suckers are more difficult. They can be spot sprayed or **cut & swab** – cut the stem close to the ground and immediately apply appropriate herbicide.
- Large trees may require professional experienced tree removal. The **drill & fill method** is recommended for mature plants as they can regrow from cut mature stumps. This require holes to be drilled on a downward angle into the base of the tree through the outer sapwood 10mm diameter 3-5cm apart. Fill holes with appropriate herbicide

**Suitable replacement plants will be available FREE & REDUCED COST to residents & landholders willing to remove the woody weed from their properties**

***Please contact the nursery for advice & support with your woody weeds control***



## ***Acacia saligna* information & photos:**

*Weeds of Australia* - Biosecurity Queensland Edition  
Queensland Government

[https://keyserver.lucidcentral.org/weeds/data/media/Html/acacia\\_saligna.htm](https://keyserver.lucidcentral.org/weeds/data/media/Html/acacia_saligna.htm)

*Controlling Acacia Saligna around the Lower Lakes*

GW LAP

<http://www.gwlap.org.au/wp-content/uploads/2016/04/Control-of-Golden-Wreath-Wattle-Final2.pdf>

# *Thankyou*

## **CONTACT DETAILS**

Clayton Bay Community Nursery – Tuesday & Thursday

### **CBNEG**

[claytonbayneg@gmail.com](mailto:claytonbayneg@gmail.com)

0418 838 003

### **CBCAI**

[info@claytonbay.org.au](mailto:info@claytonbay.org.au)

0488 4532 02

