

Clayton Bay Chronicle

Summer 2021 \$ 2.00



President's Corner



Welcome to our Indian summer edition of the Chronicle.

A particular thankyou to Letho who has stepped into the role of editor of the newsletter, which has a new format.

There are some exciting changes going on currently, with Angie and Letho running the Postal Agency at the hall. On Wednesday afternoons there is an opportunity to meet up with friends or welcome new residents to town over a cuppa and a muffin, lovingly prepared by Pat.

Initial planning is underway for a welcome upgrade to the veranda area at the hall, with paving, seating and better access to the pizza oven. We are waiting to hear if we have been successful in the Stronger Communities grant, if not we have other grants we can apply for. It will go ahead! Thanks to Mick Daw for taking on the role of project manager and to Phil Holliday for doing the drawings.

Another thankyou to all the volunteers who made the Australia Day breakfast a great event and to the generosity of the community. I look forward to being able to hand over a cheque for \$2484 to the CFS.

Now we are underway with planning our Winter solstice bonfire. We missed out last year due to COVID, however this year with a few changes it will be another memorable occasion.

I wish you a peaceful and happy 2021.

Ruth Ambrose

Local Plumbing & Gas Fitting
Reliable ~ Friendly ~ Affordable

Call Andy or Jay:
0408 807 212
Alexandrina Plumbing / Lic. 4925

- After Hours Emergency
- All domestic plumbing repairs
- Hot water - Repair/Replace
- Gas Fitting - New/Existing
- Rain water & pumps
- All marine & mobile homes



Australia Day Breakfast

It was "all hands-on deck" at the Clayton Bay Boat Club early in the morning of Australia Day. The CBCA committee was not too sure if the CFS volunteers would be able to attend as they usually do to cook the bbq, given that they were attending the Cherry Gardens fire.

But they turned up bright and early to help us set up and they were soon kept busy with cooking. We are most grateful to all the other community members who spontaneously stepped in to offer help with the setting up, clearing up afterwards, selling raffle tickets, cooking the pancakes and donating fruit and items for the raffle. A special mention must be made of the Mt Barker Strawberry Farm who generously donated the delicious strawberries for the pancakes.

Local Ngarrindjeri man Kevin gave the welcome to country and Jeremiah gave a rousing rendition of the national anthem on the bagpipes. Ruth Ambrose gave a short speech and especially mentioned the wonderful efforts of our local CFS Brigade who had helped a friend of hers to save her property in the fires the day before.

We are all truly grateful for the hard work and dedication of our CFS and we are pleased that the breakfast made \$2484 that will be presented to the Brigade at a training session on their last training session for the year in early May.

Thank you to everyone for your support and attendance at the event. Ginny Edgerley



Local Ukulele Group

Our small group of happy "pluckers" have been meeting every Wednesday since last year, practising madly & enjoying each other's company. We don't usually play for an audience so we were excited when asked by the good folk at "Lewis Fields" nursing home to play for them recently. We had a great time, had some equally great feedback and a good feed. Thank you, "Lewis Fields", for inviting us. Mick Daw



Yellow Bin Dinners

Towards the end of last year when we were in lock down, the last of our "Yellow Bin Dinners", presented by the CBCA were put on hold. We are happy to report that they have commenced for 2021. The dinners naturally occur every second Friday night when your yellow bin goes out for collection. They're held at the Clayton Bay Community Hall commencing at 6pm onwards. Bring your own dinner, drinks, cutlery and glasses.

The following dates are when the "Yellow Bin Dinner's will occur

26th March, 9th April, 23rd April, 7th May & 21st May.

8/3/2021

CBCA Inc & Hall Hire Insurance

I would like to give out some information and update the community on matters regarding Insurance that the Association requires to function, and to assure our members that the committee is not purposefully hindering the use of the Hall without reason.

The Association currently pays for 5 different insurances, with a cost of \$2,279 per annum.

- 1. Public & Products Liability - CBCA organised and run event/activity**
- 2. Business Pack – Building and Contents insurance**
- 3. Associations Liability – Insured for loss in respect of claims made against us from any negligent act or error, omission, breach of duty or power etc**
- 4. Person Accident – Bodily injury arising from an accident whilst performing unpaid voluntary work authorised by us.**
- 5. Public & Products Liability – ADHOC Hirers – 10 one- off events per annum held by individual hirers for weddings, birthdays or funerals.**

There have been various historical usages of the Hall over the past 35 years. However, times have changed and so have many of the laws that affect the Association, which means that in some cases what has been allowed in the past can no longer continue.

Over the last 6 months or so we have had many discussions with our insurers regarding the 5th Insurance policy, Public and Product Liability for ADHOC Hirers and what our legal responsibilities are.

Below is a quote from our insurer regarding all our policies and specifically the Adhoc Hirers policy;

“The Clayton Bay Community Association policies only cover Clayton Bay Community Association events and activities; it does not cover events that are being run and organised by someone who just so happens to be a member of Clayton Bay Community Association.”

Any users of the hall must have their own insurance, any established groups must have their own insurance. Sole Traders/Business cannot access the Adhoc Hirers policy nor can established groups.

Hopefully this clarifies things for everyone.

Myra Hood Treasurer CBCA Inc

Ruth Ambrose: President 0431094635

&

CBCA Committee



Clayton CFS

As summer draws to a close, Clayton CFS is being kept busy with callouts both local and further afield. From July up until the end of February, Clayton Brigade has responded to 23 call outs (incidents) with a total number of 98 crew from our group of just 16 volunteer fire fighters.

You may not know, but as well as responding to local incidents, on days of a total fire ban in either Murraylands or Mount Lofty Ranges fire ban districts, our brigade is rostered to respond to incidents that require multiple resources from across the region or state. These are referred to as Strike Teams.

Clayton Brigade has nominated crew available and ready to respond if and when required. The recent Cherry Gardens fire was such an occasion. Clayton crew responded to the Cherry Gardens fire on the first evening when the fire was at its most critical stage of this major incident and also during subsequent days to assist in extinguishing small burns, to eliminate the risk of further spread. We not only crew our own truck, but often Clayton's members are called upon to assist other brigades by crewing their appliances on composite Strike Teams as well as crewing the Groups Bulk Water Carrier.

In December, Clayton crew were called on to assist at the fires at Lucindale and Yumali. Strike Teams are utilised to support and relieve other brigades, groups or broader regions when required. Days or nights are often long, sometimes up to 16 hours including travel, briefings and fire ground activity. It takes a team effort though, and at large, ongoing incidents we are lucky to have the support from CFS Operation Brigades, SES, SAPOL and SAAS. But most importantly, we are fed very well by the Salvation Army mobile catering units.

It's not all just about our firefighters. Clayton Brigade has a group of wonderful crew in our operational support team. They are the backbone of the brigade doing the hard yards in supporting our brigade by raising funds to ensure the brigade is equipped with the tools and equipment needed. Our ops team also provide catering for training courses and brigade meetings and provide assistance in maintaining our facility.

As our community grows, so does the need for Clayton CFS to be prepared to respond in case of an emergency. But we can't do this unless we have a strong membership base. We are looking for new members, in particular as firefighters. So, if think you can spare some time and have a responsible level of fitness, then why not come and talk to us on Saturday 27 March at 1pm at the Clayton CFS fire shed about what's involved and how to join our friendly team.

Lynne Dickson

Clayton CFS

Ph: 0447 767 980



Come 'n Try @ CLAYTON CFS

1pm on Saturday 27th March

Clayton CFS Fire Shed

If you're interested in being a Fire Fighter and want to be part of a team that really makes a difference, then come along on Saturday 27th March @ 1pm and hear what's involved, and how to become a member. We even recruit Cadets from the age of 14.

Volunteering is very rewarding and Clayton CFS is dependent on local community members to give some of their time to help make our community a safer place.

If you cannot make it but would like to talk to one of us about membership opportunities, then contact Jeremiah Doecke, Brigade Captain on 0478 707 208 or Lynne Dickson, Brigade Admin on 0447 767 980.



All aspects of electrical with 15+ years of experience.

Domestic, Commercial, T.V., Audio, Data & Phone

Just give us a call.

Lic: PGE275884

ABN: 20525154262

Leigh: 0410 798 001

Email: Leighaustinelectrical@outlook.com

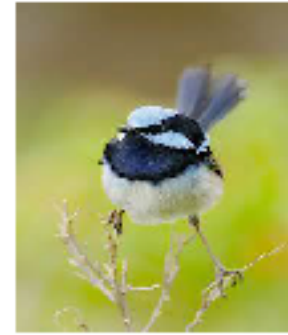
Find us on
Facebook



BIRDS IN OUR AREA

Superb Fairy-wrens

I wrote about these beautiful, tiny birds a while back but I am going to revisit information about them because I feel that they are more prevalent in our area at the moment. Many people in the community are saying that they are seeing Superb Fairy-wrens on their properties and are curious about their groupings, colouring and behaviour.



In January I was very lucky to have a small dome shaped nest built in my lavender bush and watch a pair of Superb Fairy-wrens furiously flying back and forth feeding the young until they fledged and flew off with the adults.

Fairy-wrens have intriguing social behaviour. Their social groups consist of breeding and non-breeding males, females and juveniles.

Males from outside the social group sire the majority of young. Several males can court the female within half an hour, and research has shown, that she can briefly leave her territory to visit the first male that became blue earlier in the year!

Generally, the blue male moults from March to August into dull brown plumage after the breeding season. Some dominant males may be fully coloured all year or start moulting into breeding plumage again as early as April. Keep an eye out now for moulting males with very patchy coloured plumage. Non-breeding males have a black bill and navy-blue tail; females have an orange/red bill and lores with a lighter blue tail and juveniles are similar to females with a brown tail.

Enjoy watching the Superb Fairy-wrens flitting between shrubs, trees and in bare open spaces foraging for insects and other arthropods.

Mozzie



Nestled on the shores of a picturesque bay, surrounded by trees and abundant birdlife, Clayton Bay Riverside Holiday Park is a tranquil, relaxing tourist destination.

Accommodation options

- ◆ Powered sites
- ◆ Unpowered sites
- ◆ Retro onsite vans
- ◆ Luxury Boatman's Cabin

Contact Danny and Claire

Tel: 08 8537 0372

Email: info@claytonbayrhp.com.au

Website: www.claytonbayrhp.com.au

Address: Island View Drive,
Clayton Bay SA 5256



Follow us!



CBNEG growing for Lucindale fire affected zones

Clayton Bay Nursery has taken responsibility for adding a further 1000 plants to its list for this year. Trees for Life and Landcare SA are promoting a plan to get revegetation for the Lucindale Fire areas kickstarted by providing kits to grow 50 plants at a price of \$60. All seed is sourced from the local areas around the fire ground.

CBNEG has bought 20 kits and our volunteers will do all of the propagation at the nursery.

Many of you, our members, are time poor but have a keen interest in restoring the environment. We are currently inviting members to sponsor our efforts to undertake this additional work with a donation of \$30 for one box of plants.

If you would like to make a donation, please let us know and we will advise re payments.

Volunteers nationwide are working furiously to reinstate vegetation.

Carole Richardson



All mowing & gardening services in Clayton Bay & Milang

Lawns & blocks mowed/slashed, pruning, spraying, chainsaw work, revegetation,

Garden maintenance & watering, bushfire prevention clean-ups

Holiday homes/ domestic/ business

Local family business since 1997

Call: 0411 237 248

Terry Way Reserve – Expressions of Interest

CBNEG was successful with a Federal Government 'Grass Roots' grant of \$6446.44 to remove woody weeds from Section 1 (of 2) at Terry Way Reserve. Alexandrina Council donated \$4000 and CBNEG \$1000 to the project.

The woody weeds have been cut & mulched by a Council approved contractor, and the nursery is growing 400 seedlings to plant & guard this winter.

As part of the grant and to increase interest in the reserve, we are forming an informal 'Friends of Terry Way' group. The aim is to plant the 400 tube stock in winter 2021, and follow up with control of seedling woody weeds, especially *Acacia saligna* & *Pinus halapensis*. We will apply for another grant this year to complete the second half of the reserve. In time the reserve will be an excellent link to the foreshore revegetation, and the risk to the town of fire from the north will be much reduced.

If you are interested in being part of this informal group, have some input, learn about our local plants and animals or would like to help with 2-3 working bees / year, please contact:

Carole Richardson

Clayton Bay Nursery Manager

claytonbayneg@gmail.com

0418838003





Clayton Bay Earthworks

General earthworks, driveways, site laser leveling, trenching, block slashing, postholes to 600mm diameter, hydraulic rock breaker, tree and stump removal

We have the following equipment in Clayton Bay ready to service your requirements.

3 ton excavator with numerous attachments, bobcat, 35 hp tractor with industrial slasher, 4 ton tip truck, ditchwitch trenching machine.

Bulk soil, road base, gravel, and land fill supplies can be organized at competitive rates

Tim and Linda Roberts

0419 038 499

ABN: 92 577 965 937



We Love it Here!

Hello CBCA,

The Boat Club hopes y'all are keeping fit and well. Luckily SA has been COVID safe and we're all remaining positive and vigilant - bring on the vaccinations.

The Boat Club Members have been busy since the last Chronicle with a large section of roofing replaced and it's now completely watertight. The cruising Members have managed to get out and about in a COVID friendly way with trips to Coffin Bay and the Coorong going very well and mini cruises around our fantastic lower lakes. A mini-River Ramble from Renmark to Border Cliffs is being planned to finish off the summer and autumn season and will include trailer yachts, cruisers and house boats.

The Racers have also been active in the local short and long races and with other Clubs. Some Members acquitting themselves well with many placing. The 2021 Rat Race Regatta is happening on 20-21 March and will provide great viewing from the Clayton Bay Cliffs.

Keeping connected as a community is important and engaged, this last Christmas and New Year we were pleased to host the annual Carols on Christmas Eve and the CBCA-CFS Australia Day Breakfast



January was a bit more hectic than usual with the Flying 15 Regatta, Pirate Day, Quiz Night and a massive Hamburger Night keeping everyone on their toes.



Coming events:

- Easter Weekend – Cruising
- Racing and First Sunday Lunch

Please note that some restrictions and conditions (Members, relatives and close friends) remain in place with appropriate signage. Also, please remember to do a QR Code check-in or paper check-in if you're visiting the Club.

Stay safe, active and informed.

Kind Regards

Ric Kies – Secretary - Clayton Bay Boat Club

Threatened frog bounces back

Clayton Bay is the home of the Southern Bell Frog Project and volunteers are holding a Family Fun Frog Awareness Day (FFFAD) to promote the project, provide information about this particular frog while having lots of froggy fun, and taking part in games and activities. Children will be encouraged to get their Passport stamped at various activity and information stations, and everyone can take part in the fun and games. There will be stalls, froggy snacks, morning and afternoon tea as well as a sausage sizzle. Come along and join in the fun and find out about this unique project!



The nationally endangered Southern Bell Frog, *Litoria raniformis*, (left) has been in decline across the Lower Murray, including the Lower Lakes, but now they have returned to Clayton Bay in a purpose-built conservation facility, which is hoping to help recover the species across the region. One of the largest frog species in Australia (up to 110 mm length), the Southern Bell Frog is bright green with irregular brown and gold patches and a pale green stripe down the centre of its body. They are often referred to as the growling grass frog due to the males growling engine-like call which can be heard during the breeding season in the warmer months. Interestingly, this species is an active cannibal, happily feeding on other frogs.

The Southern Bell frog conservation facility was funded by Peter & Mia Mirtschin and is run by amazing volunteers who ensure the frogs are cleaned, fed and looked after with the support of Aquasave-NGT (Nature Glenelg Trust) and technical input from Rupert Mathwin. The facility is located under security at the Clayton Bay Nursery and Environment Groups plant nursery and the Clayton Bay Community Associations Community Garden. It is intended to raise tadpoles and froglets to various stages of development for reintroduction in the Lower Lakes and lower reaches of the Murray River. It is also hoped that some of the excess production will be made available for research purposes to investigate the biology and ecology of the species and how the threats are thought to be the cause of their decline.





Walking Group

Walking group
Fridays—Meet at the
hall at 9.00am for a
brisk hour walk around
the walking trail.
Free

With the help of people from FAME, Aquasave, Nature Glenelg Trust, Rupert Mathwin from Flinders University, Kate Mason - the Department of Environment, CBNEG and the CBCA, Investigator College, Regina Durbridge, the required approvals were obtained and the frog hatchery built, and outside breeding pens established. (continued next page).



We thank Tracy McNamara from [the Foundation for Australia's Most Endangered Species \(FAME\)](#) for her administration of the project, the Clayton Bay Nursery and Environment Group, the Clayton Bay Community Association and the Alexandrina Council who have provided a home from where we all operate. Over the past year, Aquasave-NGT staff, including Rupert Mathwin, Ruan Gannon, Cory Young and Sylvia Zukowski have all worked on the facility and of course the volunteers who feed, clean and care for the frogs and the facilities at Clayton Bay.

Left: Tracy McNamara (left) and Caroline Newman (right) on the outside of the Southern Bell Frog breeding pens

FAME is a grassroots not for profit funding organisation for supporting Australian threatened species. They support projects across Australia such as threatened birds on Lord Howe Island, the Western Quoll in the Ikara-Flinders Ranges of South Australia, Tasmanian devil, Southern cassowary in Queensland, Brush-tailed rock wallabies from eastern Australia, and Kangaroo Island Dunnart.

FAME supports small organisations, ecologists, and scientists who would otherwise not attract funding. Both big and small projects across Australia are supported by providing on-ground partners - who are the experts - with financial and conservation support, to allow them to focus on saving what is most important - our precious flora and fauna - from extinction.

As everyone can appreciate, projects like our bell frog require ongoing funds and anyone wanting to donate can do so on the FAME website <https://www.fame.org.au/projects/help-the-southern-bell-frog-bounce-back>



Tadpoles stay indoors until they morph into frogs



Tadpole develops rear legs



Frogs to be released into the outdoor pens ready to breed

DO YOU HAVE AN ARTICLE FOR THE CHRONICLE?

Humorous – Heartwarming – Unbelievable

Does someone or something you know deserve a bouquet or brick bat?

Email your articles to chronicle@claytonbay.org.au

(All submissions published at the discretion of the Editor)



FFFAD
Family Fun Frog Awareness Day

- Come along and join in the fun, games & activities.
- Learn about the Southern Bell Frog Project.
- Tour the frog breeding facility.
- Frog information, Stalls and more.

When: Saturday 24th April 2021
Where: Clayton Bay Hall & Grounds
Time: 11am—3pm

BYO Picnic
Also available:
Sausage Sizzle,
morning & afternoon tea

For more information, to volunteer or if you would like to have a stall
 contact Mia 0434 269 878 or Leonie 0407 394 907

Supported by the Clayton Bay Community Association



Wednesday CBCA “Open House”

Each Wednesday from mid-day, when the Post Office opens, until 2pm, Volunteers are serving coffee, tea and homemade muffins at the meeting room at the community Hall. There is also the opportunity for you to join in and play board games during this time.

Everyone is welcome to pop in for a cuppa, regardless of whether you are collecting mail or not. All that you are required to bring are a friendly smile and a small donation.

The response to this activity has been fantastic. There is constant buzz of conversation and laughter as folk meet new people or catch up with friends.

We hope that residents and visitors will continue to enjoy these occasions and perpetuate the Clayton Bay reputation of being a friendly and welcoming community.

Pat Smytherman





1. The Clayton Bay camp is a children's holiday and aquatic adventure camp which has recently undergone extensive renovations.
2. The camp comprises live-in accommodation for children and staff with a large activities building, a dining hall, with adjoining kitchen, bunk rooms, an adjacent shower and toilet block, and another six brick bunkhouses.
3. The first camp for 2021 was held in February in near perfect weather. Primary school children camped in tents and were seen on the water in canoes getting to know our waterways.

Leonie Henderson



WINE FUNDRAISER

Example of the wines available are:

Winery Road Brut Cuvee
Winery Road Sauvignon Blanc
Steeple Jack Moscato
Steeple Jack Shiraz
Winery Road Shiraz Cabernet



Cost per Dozen is \$96.00—That's \$8.00 per bottle!

Orders can be 6 bottles of 2 varieties!

Your order will be delivered FREE to any Clayton Bay address

ORDER NOW! 0407 394 907

"An introduction from a new(ish) resident, Heather Taylor Johnson"

Hello! It's been two years since my husband Dash and I bought 41 Island View Drive – you may have seen our rainbow peace flag flying when the wind's not so rough. We hope to move down here permanently once our three kids – Guthrow, Sunny and Matilda – are out of high school, a very long 6 years away, but in the meantime it's a holiday home for us as well as a very modest writers' retreat. As a professional writer (and sometimes-academic of Creative Writing)

I love facilitating creative writing workshops and assessing manuscripts, and I especially love the mentoring side of things. It's something I've been doing for almost two decades through various organisations such as writers' centres and writers' festivals, universities, councils, etc, and now I get to do it in the most beautiful spot in South Australia.

I'd like to do something with writers in the community, too, something in which booking accommodation isn't a requirement. Just trying to feel out the writers' here, wondering what sorts of things you might be interested in – a monthly writers' workshop with critiquing? A seasonal workshop with writing exercises? I am a published novelist, poet and essayist. You can see more about me and about the writers' retreat here: <http://www.heathertaylorjohnson.com/stay-at-island-view.../>

I'd love to make contact with you about the local side of things if you have any ideas. Here's my email: kingstreet1@ozemail.com.au. And apologies if our dog Tom has barked at you when you've walked past our place. He's decided his favourite things to do in his old age are sleep and guard us, though not simultaneously.

Cheers,

'Heather'

Oil and Acrylic General Painting Mentoring Classes for Beginners & Intermediates

When: 2nd Saturday and 2nd Tuesday of
each month

10:00am to 12:30pm

Cost: \$20

Where: 61 Alexandrina Drive
Clayton Bay

*Numbers are limited, so imperative
that you ring to register and book
your spot.*



Artist: Madeleine Elkin

0401 839 592 | melkin@adam.com.au | www.maearts.com



Clayton Bay Community Association

ABN 72 700 610 232

Mobile: 0448 453 202
www.claytonbay.org.au

Like us on Facebook
info@claytonbay.org.au



Committee 2020/21

President	Ruth Ambrose	president@claytonbay.org.au
Vice President/Hall Hire	Letho Kostoglou	hallhire@claytonbay.org.au
Chronicle Editor	Letho Kostoglou	chronicle@claytonbay.org.au
Secretary	Peter Lomman	secretary@claytonbay.org.au
Treasurer Membership	Myra Hood	treasurer@claytonbay.org.au membership@claytonbay.org.au
Committee member	Ginny Edgerley	
Committee member	Michael Daw	
Committee member	Mary Culhane-Brown	
Committee member	Angie Daw	
Alexandrina Council Rep	Karyn Bradford	Karyn.Bradford@Alexandrina.sa.gov.au

The Carpet Doctor

Cleaning, repairs & re-stretching

Call Max 0409 692 003

www.thecarpetdoctor.com.au



Clayton Bay Community Garden
Grow fresh produce for yourself
& the community

Though it's been nice to have fewer hot days, the Community Garden's plants would probably have appreciated just a little more heat and less humidity – particularly the tomatoes. The orchard trees appreciated a good haircut, resulting in a good crop of apricots, with lemons coming along nicely and the apple trees full of fruit. We've also planted a navel orange tree. Next year should see the nectarine tree returning to a good fruiting season.

Covid put paid to activity for a while last year, and we had some supply problems due to increased demand for items or inability to source them locally during lockdowns and border closures. But at last, we're coming to the end of the garden's major refurbishment, at least the parts funded by SA Health's Office for Ageing Well, and Open Gardens SA. The raised beds are now done and work has started on 6 wicking beds. Mick did a wonderful job reconfiguring the irrigation system. We're monitoring water usage in an effort to become more water-efficient.

We're all learning as we go, and it sure is a steep learning curve when you haven't done much veggie gardening before! But between handy hints from more experienced gardeners, forays onto the internet, and trial and error, we're getting there. We'd love to welcome some more volunteers on board. Tuesday and Thursday mornings are our regular workdays, when we also share morning tea and some socialising with the Nursery volunteers. Even when it's not very busy, it's great fun and if you're new in town, a good way to meet your fellow Clayton residents.

Glenda Dodd

Promote your Business in the Clayton Bay Chronicle

(Prices per Financial Year)

\$ 100 for a full page

\$ 50 for half a page

\$ 25 for a quarter of a page

What are triffids doing in the Community Garden?



That weird-looking veggie that appeared on the Community Garden's veggie cart isn't a triffid, though it could pass for one. It's Kohlrabi, a member of the brassica family – as is the turnip. But unlike the turnip, kohlrabi's bulbous part grows above the ground, as part of the stem.

So what does it taste like? Some say it's like a cabbage, others say it's like a turnip but milder, yet others liken it to a cross between a turnip and an apple.

You can add it to stews and soups, roast it, or eat it raw. Cut off the root and leaves, and use a sharp paring knife to remove the thick skin. To eat it raw, julienne it or shave it and add it to salads; it's particularly good added to coleslaw. Or toss it with shaved parmesan, thinly sliced tart apples, mint, hazelnuts, and a vinaigrette dressing. It's full of nutrients, too; fibre, vitamin B6, potassium, magnesium, manganese, folate, and heaps of Vitamin C.

Glenda Dodd

JOIN US AT THE COMMUNITY GARDEN!



GROW VEGGIES & FRUIT FOR THE COMMUNITY

SOCIALISE WITH OTHER COMMUNITY MEMBERS

SHARE YOUR GARDENING SKILLS AND EXPERIENCE, OR LEARN SOME NEW SKILLS

ALL AGES AND ABILITIES WELCOME

TUESDAYS 9am – 12 noon

Enter via the Clayton Bay Nursery & Environment Group gate on Alexandrina Ave



Sails Cafe

AT CLAYTON BAY

EAT LOCAL AND SUPPORT YOUR LOCAL

OPEN 5 DAYS, WED-SUN, 10AM-2PM

DINNER 5-8PM FRI AND SAT

BREAKFAST SAT AND SUN 10AM-11.30AM

BOOKINGS 8537 0177

river views, delicious food and regional wines
indoor and outdoor dining plus takeaway
relaxing and family friendly



like us to keep in touch
with events and offers

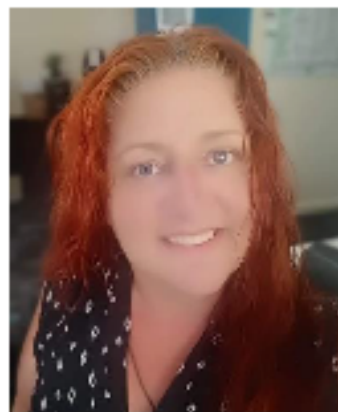
talk to us about bookings outside of normal hours
for group bookings of 20 or more!

New Staff Member at Community Centre

Vivienne Maher

**Appointed to promote
Metal Health in our region**

Growing Life Connections at MOSHCC has secured funding from the South Australian Department of Human Services and the Alexandrina Council, with the support of the Faye Fuller Foundation and The Australian Centre for Social Innovation to run a new program called Our Towns.



This is a regional project spanning a cluster of 7 towns including Ashbourne, Clayton Bay, Finnis, Langhorne Creek, Milang, Strathalbyn and Woodchester.

Part of this program will include linking in with existing groups in the community so that we can all work together to support those in need with a strong network supporting Mental Health and Wellbeing.

The funding has enabled us to employ a new team member to work alongside The Growing Life Connections team as the Our Towns Project Officer.

We are excited to welcome Vivienne Maher to the team at MOSHCC and to the wider GLC Partnership. Vivienne is a local Strathalbyn person who has significant knowledge of our region and many skills and experience to pull this project together. Vivienne has worked in the Community Services sector for the last 10 years across the Murraylands and Fleurieu Regions.

With a background in both Youth Work and Social Work, Vivienne brings her friendly, positive, down to earth nature and a passion for Mental Health and Suicide Prevention in the local region.

Vivienne will facilitate support and training to volunteers across the regions, who will then play a key role in the Our Towns Program. Support is focussed specifically at reaching isolated and vulnerable families and individuals. You may meet Vivienne soon as she makes links with existing groups in each town. If you are interested in volunteering in this programme with Vivienne please call MOSHCC on 8537 0687



LAKES
HOME CARE
your community
your choice

MILANG
OLD SCHOOL HOUSE
COMMUNITY CENTRE



Lakes Home Care is a community-based Aged Care service for in-home support funded through the Commonwealth Home Support Program and Home Care Package Program

Contact us for a personalised, flexible service designed around your needs, managed locally by the community to be cost effective and responsive.

Call our office at the Community Centre on (08) 8537 0687
or 0488 435 040

www.lakeshomecare.org.au



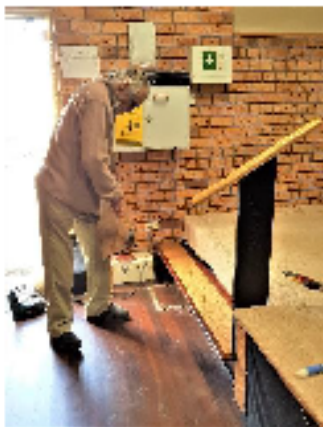
Clayton Bay Community Postal Agency

Angie Daw, pictured right, is the new Post Mistress of the "Clayton Bay Community Postal Agency". Two weeks before Christmas, the contract for the Clayton Bay Postal Agency came up for grabs, and Angie grabbed at both the opportunity to save her home town's postal service and thereby serve her community, with the support of Letho Kostoglou her fellow co-worker. Together, they both run the Clayton Bay Community Postal Agency providing a daily postal service Monday – Thursday between 12 – 2pm and Friday between 4 – 6 pm. The Clayton Bay Postal Agency is independently run and the CBCA is not responsible for the running of the Postal Agency.

Forty-eight post boxes have been acquired for the postal agency to be installed in the next month and, the mail box currently adjacent to SAILS Café will soon be relocated on the corner of Alexandrina Drive and Grandview Drive. Watch this space!



Clayton Bay Community Hall Stage Refit



Through the artistic flair of local wood working artist Bob Keogh pictured, the Clayton Bay Community hall's stage is getting a makeover notably, a new stair and accompanying bannister. Bob's concept and design give the stage a more streamlined linear appearance. The stair comprises of two sections. The inner section is made of Stringy bark while the exterior is made of Jarrah. The handrail to the bannister is made from Raman wood and the rise is made of Oregon. All the timber is locally sourced. Both the stair and bannister can be removed in the event the stage needs to be re positioned.

Deadlines going forward for Articles & Advertisements

Winter: 15th July 2021

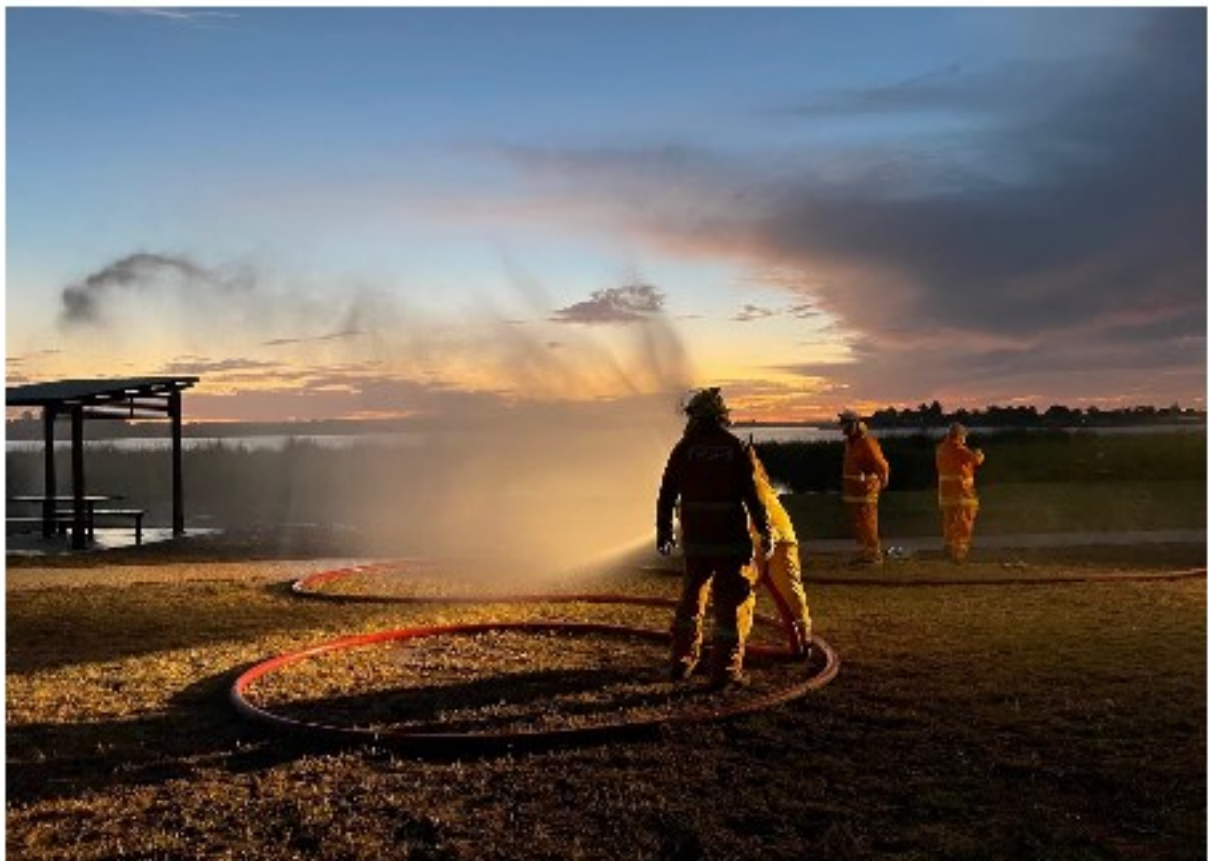
Spring: 15th October 2021

Summer: 15th January 2021

Autumn: 15th April 2021



Our valiant Clayton CFS crew training.



CLAYTON BAY CHRONICLE – SUMMER 2021

