

Clayton Bay Chronicle

Autumn 2022 \$2.00

Photo: Donna Hughson





If you have ever thought you would like to try your hand at painting, or pick the brush back up again after years of being too busy - then give Madi a buzz - it's never too late! She would love to hear from you. See pages 20-21

Left: © "Manta Ray" by Madeleine Elkin (75x75cm oils)

Below left: Retention basin works

Below right: Alexandrina Estate roadworks

See page 7 (Photos Letho Kostoglou)



Diary Dates 2022

Keep these dates free and join the fun:

April 22nd: Yellow Bin Dinner

May 6th: Beach Party Dance

May 20th: Yellow Bin Dinner

June 18th: Winter Solstice Bonfire

July 15th: Yellow Bin Dinner

August 6th: CBCA AGM

August 13th: Regenerative Agriculture Forum-more info next edition

August 20-21 & 27-28: SALA (South Australian Living Artists) exhibition

October 1st: Opening of the Annabelle Collett exhibition-more info next edition

Visit the Clayton Bay Community Association Website, claytonbay.org.au and the CBCA Facebook page to keep up to date with what is happening.



President's corner



Welcome to the Autumn edition of the Chronicle.

Whether you've been out on the water, in your garden or walking around our piece of paradise, I hope that you've been enjoying the best of what Clayton Bay has to offer. With the way that "Sold" signs appear quickly on properties for sale here, it looks like the word has spread and people are keen to buy a holiday house here or settle more permanently.

The CBCA committee has been meeting regularly each month, keeping an eye on how to navigate our way through the changing Covid regulations and still coordinate activities in the town.

To this end, the community dance was postponed until 6 May and at this stage, we invite you all to attend a Beach Party themed dance. Sandy will again be transforming the hall with her fabulous decorations and Roxy Music will be providing the music and videos.

The winter solstice bonfire will be held on 18 June and the focus of the event will be to raise funds for our local CFS. Given that we missed out on the opportunity to raise some funds due to having to cancel the Australia Day breakfast, we are planning to start a bit earlier and provide some activities for the kids – more details later.

We are pleased that the popular "Yellow Bin" dinners will be starting again on Friday, 22 April. These dinners are BYO everything event, held in the meeting room at the hall from 6-8pm. Everyone welcome.

Don't forget to call in to the hall on Wednesdays, (12-2pm) for a cuppa, muffin and chat, hosted by Leonie, Marg and Pat. It's a good way to meet up with friends or meet new people and the muffins are delicious!

See you at the Beach Party!!

Ginny Edgerley

As summer draws to an end, we have been reflecting on the fire season we have experienced. We are particularly thankful for the quieter period we have enjoyed. While we have been called to a number of incidents this season, on the whole, it has been a relief from the intensity of recent years. We are especially thankful that there have been limited emergencies in our immediate community of Clayton Bay and Point Sturt. There have been times we have been called out further afield to Finniss and Ashbourne to assist other brigades, and a number of times we have been put on high alert for strike teams to other parts of the state. Whilst it has been a quieter season so far, it's important to continue to be vigilant as we never know what the weather and the environment has in store for us. We thank the community for keeping an eye out for total fire ban days, and keeping bushfire survival plans in mind.

Despite the quieter season, our dedicated Clayton brigade members

have continued to be attentive and vigilant in our readiness to respond. We continue to train to a high standard, and regularly debrief after the incidents we have attended. As a professional emergency service, it is important for us to recognise and plan for the vast range of incidents that we may respond to. We often create scenarios at training that allow us to train for events that we otherwise may not see. There are the more obvious incidents, such as the fire related events, however, there are also scenarios, such as assisting South Australian Ambulance Service, helicopter landings, vehicle accidents, hazardous materials and waste, swift water and flooding. We never know when we may need to draw on the skills needed for these situations.

We have recently celebrated International Women's Day on March 8, 2022. It was a day of celebrating all women from around the world and their achievements and successes. The Country Fire Service is blessed to have such wonderful, dedicated and brave women throughout the organisation, whether they be in

(continued page 5)

volunteer or paid roles, in both active firefighting or operational positions. The Clayton Brigade, specifically, appreciates the dedication and bravery of our own women members. We are blessed to have Lynne Dickson in a leadership, administration and firefighting role, and firefighters Laura Maddern and Sue Ahrns. All three are brilliant firefighters. We are also thankful for Tracy Falzon and her team of dedicated operational members. The role they do is highly important in allowing us to be effective in our firefighting operations.

If you are interested in being involved in any capacity we would love to hear from you. I personally attest that being a CFS volunteer is highly rewarding. It is knowing that you could be called upon to assist the community in an emergency. The training is first class, and is something I particularly enjoy. We train every first and third Tuesday of the month, and accredited training programs are also offered through formal CFS courses. I've personally signed up to do a number of these

courses this year and I am really looking forward to them.

Many blessings to all.

Ben Chudleigh

Firefighter CFS Clayton Brigade

Do you require transport assistance to and from medical appointments?



**Then MOSHCC can assist you.
Call 8537 0687**

Please book a week in advance
(This Service is by donation)

**Promote your business
in the Clayton Bay Chronicle**

\$100 for full page

\$50 for half page

\$25 for a quarter page

(All rates are per year)

Email the editor

chronicle@claytonbay.org.au



Clayton Bay Earthworks

General earthworks, driveways, site laser leveling, trenching, block slashing, postholes to 600mm diameter, hydraulic rock breaker, tree and stump removal

We have the following equipment in Clayton Bay ready to service your requirements.

3 ton excavator with numerous attachments, bobcat, 35 hp tractor with industrial slasher, 4 ton tip truck, ditchwitch trenching machine.

Bulk soil, road base, gravel, and land fill supplies can be organized at competitive rates

Tim and Linda Roberts

0419 038 499

ABN: 92 577 965 937

Around the Bay



Clayton Bay's very own Sam Mulcahy is one of the artists selected to exhibit at the Heysen Sculptural Biennial.

After receiving a large number of applicants, 23 artists have been selected to present their work for this year's Heysen Sculpture Biennial at Carrick Hill house!

This year's exhibition will be held from 23rd October 2022 to the 15th of January 2023 with an opening event on the 22nd October.

Congratulations Sam! Visit the website

www.heysensculpturebiennial.com.au/2022

The River Lakes and Coorong Action Group Inc held their AGM at the hall Sunday 6th March with guest speakers talking about climate change and sea level rise, the one million turtles Community Conservation Program, the lost Coorong and water policy. (See page 34 for more information)

During afternoon tea at the hall (on a Wednesday) discussions led to the idea of inviting people to knit squares to be sewn together to make rugs to donate to Growing Life Connections who support disadvantaged people in the community. If you are interested pop in and have a chat. Squares should be in garter stich, using 8ply acrylic yarn, 40 stiches wide by 40 rows long. It does not matter what colour—the more variety the better! Donations of yarn would also be appreciated.

Works along Alexandrina Drive, opposite CBNEG, is the installation of a storm water retention basin servicing the new Clayton Bay Estate. Fourteen allotments, most already under contract or sold, and a reserve will be connected to the existing Pelican Shores with an extension to Terry Way. It is believed that some plantings will be undertaken to enhance this area.

SALA at Clayton Bay

Attention all artistic residents and weekenders of Clayton Bay, The Clayton Bay Community Association is again planning to run a community SALA exhibition held over the last 2 weekends in August. We would like to extend an invitation to all artists who are part of our Clayton Bay Community to exhibit. The artworks need to be 'fresh', not previously exhibited in SALA exhibitions.

This is a great opportunity to gather those of us who dabble or excel in artistic pursuits together, to connect or reconnect.

Please share this invitation to any other artists you know with a Clayton Bay connection.

We will describe our group as ranging from emerging artists to established artists. The art media already known to be represented will be painting and drawing, textile arts, woodworking, mosaics and glass artistry.

For the last 3 years we have incorporated a novel aspect, in presenting a

collection of mosaic art for a "People's Choice" award. It has proved to be very popular. This year we will again incorporate a People's Choice award, which will be literally unveiled at the opening event.

The birdboxes, garden totems and Murray Cod representations over the last 3 events were wonderful expressions of the variety seen when artists express themselves. You may like to enquire about this year's theme to see if you might like to join in. We would love to expand the artistic offerings and include the widest selection of artists for this year's exhibition, including you!

Please reply to Marg Mundy who is managing the process in conjunction with Pat Hawkins and Joyce Hopgood. My email address is philmarg4@bigpond.com. I welcome any other suggestions for the event. The local registration process will open soon. Please advise asap if you think you would like to participate, so your name can be included in all future correspondence and planning.

Cheers and happy artistry to you.

Marg Mundy



Hello to all CBCA Members,
Everyone at the Boat Club hopes you are keeping fit and well.

The highlight of the last few months was the CBBC Rat Race Regatta. The weather was great and a fun weekend was had by all.

*Second - Justin and Darren Stanbridge



Well done everyone and all the other CBBC participants.

Summer 2021-22 – the late summer weather is being kind to cruising Members enabling overnights and day trips. A mini River Ramble, from Waikerie is scheduled for late April to help finish off the autumn season and includes trailer yachts and cruisers.

Clayton Bay Boat Club – Application for additional space – Alexandrina Council is currently processing the application.

COVID 19 - restrictions and conditions are easing over time. Please remember to do a QR Code or paper check-in if you're visiting the Club.

Congratulations to the overall



winner, David Steele (above left) & place getters and a big thank you to all participants, volunteers and sponsors.

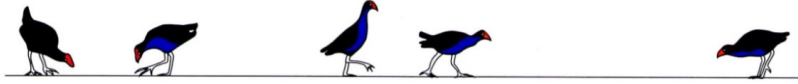
Goolwa Milang – Lake Alexandrina Classic – Saturday 12 March 22 – The Club was well represented in this year's race and it was interesting to watch – from the Clayton Cliffs as usual.

Congratulations to the CBBC place holders:

*First - Mike and Cecily South

Ric Kies

Secretary CBBC



Clayton Bay Community Association

ABN 72 700 610 232

6 Alexandrina Drive, Clayton Bay SA 5256

Like us on Facebook

Mobile: 0448 453 202 claytonbay.org.au info@claytonbay.org.au

2021-22 Committee

President	Ginny Edgerley	president@claytonbay.org.au
Vice President	Letho Kostoglou	
Secretary	Peter Lomman	secretary@claytonbay.org.au
Treasurer	Ingrid Owens	treasurer@claytonbay.org.au
Committee member	Angie Daw	
Committee member	Michael Daw	
Hall Hire	Letho Kostoglou	hallhire@claytonbay.org.au

Non Committee support

Chronicle Editor	Leonie Henderson	chronicle@claytonbay.org.au
Alexandrina Council Representative	Karyn Bradford	Karyn.Bradford@Alexandrina.sa.gov.au

Pergola Update

Hi everyone and thank you for your continued interest in what, we are assured, is the largest community project Clayton Bay has undertaken since the Community Hall was built back in 1985.

The builder is on track to commence construction within 8 weeks once he has completed other works and all the building materials have arrived.

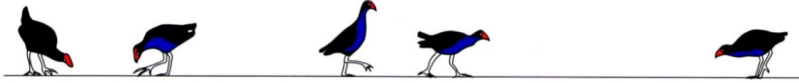
The old pergola which has served us well over the years has been taken

down for re-purposing by a local couple which has saved us having to pay for its removal.

By the time the Winter Chronicle is out we should all see some real progress made at the hall.

Mick Daw, Committee member

(A total of \$20,000 for this project was received from Rounds 6 & 7 of the Stronger Communities Grant program where Federal Members identify & invite applications from their electorate. Local MP Rebekah Sharkey invited the CBCA to apply for funding. The balance of funds will come from the associations fund raising efforts over past years.)



From the Secretary's desk

Our committee continues to listen to the community in relation to community issues, and continues to lobby councillors and communicate with council staff on issues that affect the whole Clayton Bay community.

Here are some of those issues;

- ◆ Water speed limits in Dunn's Lagoon (Marine and Harbours)
- ◆ Speed limit on Alexandrina Drive
- ◆ Maintenance and refurbishment of the Shelter Shed.
- ◆ Petitioning for public toilet facilities for those with a disability.
- ◆ Resolving issues with hall facilities, hall lighting for events, toilets, and emergency exit compliance.

We are working on improving our communication with the community and have reinstated the website and have plans to utilise this facility to publish more about what is happening around our community, in words and in pictures. Send us something you find interesting,

intriguing or informative.

The association coordinates and manages a range of community events to encourage socialisation, connection and well being including the upcoming Dance on the 6th May, and the Winter Solstice bonfire on the 18th June.

Some of the events are just for fun, and some are for fun, and fund raising to support the CFS and the community we all love to live in.

Our committee is small, but with support from our many volunteers, we really do a lot. We are all learning how to engage and manage our limited resources, and have a Governance workshop on 9th April at the hall to further understand our roles and responsibility as leaders in the community.

Peter Lomman

Membership Lucky Draw

Next draw \$125.00

At the Dance, Friday 6th May 2022

BE THERE TO WIN!



It has been my first spring / summer as Manager of the Clayton Bay Communi-

ty Nursery and it has been an interesting time with unseasonal weather having mixed impacts on the propagation season. The cooler than average weather has in general been a bonus for seedling growth with a lack of consecutive hot days, which can test the plants and the patience of nursery folk. The downside has been some erratic and slow germination with some species but conversely other species have appreciated the mild conditions. The Eucalypts, She-oaks, Melaleucas and many grasses have germinated well, whereas the species with harder seed coats like Acacias and Hardenbergias have been somewhat tardy.

Most of our plants are propagated from seed but we have also commissioned our new cutting frame for Autumn growing. Fitted with a misting system and a bottom heat mat to assist root formation this is an invaluable asset to propagate some species

where seed may not germinate readily. In addition plants grown from cuttings will produce flowers in their first season whereas seed propagated plants may not flower for quite a few years.

Seedling orders have been steady and it is hoped that this picks up with the advent of autumn. As with past seasons the nursery is propagating a range of plants on spec hoping to supply the late orders. If you are contemplating a revegetation project for autumn / winter or need some hardy local South Australian trees, shrubs, groundcovers or climbers for the home garden, now is a good time to pop into the nursery to discuss your needs with the friendly staff. The Nursery is open on Tuesdays from 9–3 and Thursdays from 9–12.

I need to acknowledge the dedicated volunteers who are the backbone of the nursery. Together they bring a cheerful commitment to their work and invariably at morning tea there is no shortage of conversation, laughter and some excellent home baked treats. Well done folks!

Phil Collins
Nursery Manager

Come Fly With Us



Have you ever wanted to fly a Spitfire? Well, you can fly a model as large as 6m or down to less than a metre wingspan. Model flying is incredibly good for your brain and well-being. Psychologists have told us stretching your brain is very good for you and flying models does just that.

There are so many different types of aircraft models. If there is a real plane you prefer, there will be a model of it you can buy. Aerobatic aircraft, gliders, warbirds, passenger aircraft, trainers, floatplanes, ducted fan jet models, bi-planes, mono-planes, helicopters and delta wings.

If you like to fly drones, we have the space and we are developing an obstacle course dedicated for sport flying drones. You name it, we fly it. If you like tethered flight, we also cater for flying control line. Come join our club. You'll never regret it. We'll look after you. We have a

trainer plane. Come and give it a go, no obligation is necessary. A flight simulator is also available to try no charge.

Peter Mirtschin

Abe's Asian

Local Clayton Bay resident, Abe Mariano, opened Abe' Asian in Strathalbyn in October last year and word is spreading as people discover the delights of the Vietnamese and Thai food available. Dishes include noodle and salad bowls, cold rolls, dumplings, spring rolls and bahn mi. Gluten free, vegan and vegetarian options are also available.

Every item is made fresh in house by our team under Abe's guidance. Abe (pronounced Ah-bay) moved to Australia 4 years ago from the Philippines to share his passion for fresh, delicious food.

Located at 21 Dawson Street Strathalbyn current opening hours are Tuesday to Saturday, 11am – 3pm as well as Thursday, Friday and Saturday 5 pm – 8pm.

Check out their website - www.abesasian.com/

Clayton Bay Composer of the Month

Sergei Rachmaninov
(1873 – 1943)



Sergei Rachmaninov, composer, pianist and conductor was born into an aristocratic musical family in Novgorod Russia on 1 April

1873. At the age of four his ability to play the piano was immediately discovered. By the age of 10 his father had squandered the family's wealth. His parents separated and Rachmaninov was sent to the house of Nikolai Zverev a prominent pianist and teacher in 1885 while he attended the Moscow Conservatorium. Zverev introduced Rachmaninov and other students to musical and artistic culture in Moscow and the students played in front of leading Russian musical figures such as Anton Rubinstein, pianist and Rachmaninov's personal idol Tchaikovsky.

At the Moscow conservatorium Rachmaninov excelled. In 1892 aged 20, he sat for his final exams in both composition and piano a year in advance. As part of his final exam, he

had to compose a one act opera in seventeen days. He wrote *Aleko* for which he received the gold medal from the Moscow conservatorium, their highest honour and personal praise from Tchaikovsky. Later that year Rachmaninov made his public debut as a concert pianist playing his famous Prelude in C sharp minor as part of the Moscow Electric Exhibition. 1897 was to be a disastrous year for the emerging composer. The premiere of his Symphony N.1 in D minor was a complete fiasco. It was rumoured that the conductor, composer Alexander Glazunov was drunk. Rachmaninov was so angry he destroyed the score and the work was never heard again in his lifetime. It was later reconstructed from instrumental parts discovered in Russia. The failed premiere plunged Rachmaninov into a depressive state lasting three years in which he wrote nothing.

Visits to a hypnotherapist Dr Nikolai Dahl slowly began to ease his depression. In 1902 Rachmaninov married Natalia Satina his cousin and later Rachmaninov became the proud father of two daughters Irina and Tatyana. He was so appreciative

of Dr Dahl's efforts that he dedicated the concerto to him. It was followed by his Cello Sonata Op. 19. In 1904 Rachmaninov became conductor of the Bolshoi Theatre for two years. From 1906 – 1917, increasingly concerned about Russia's political situation and the need to isolate himself from the public eye in order to compose Rachmaninov took his wife and two Daughters to Dresden.

There he composed his *Symphony N. 2 in E minor Op.27*, his tone poem *Isle of the Dead Op. 29* and his *Piano Concerto N. 3 in D minor Op. 30* which he played for his first tour of America in 1909. The New York premiere of his Concerto was conducted by the Austrian composer Gustav Mahler.

On 22 December 1917, shortly after the Russian revolution Rachmaninov accepted an invitation to perform ten piano recitals across Scandinavia as a pretext to leave Russia. He left on a train with his wife, daughters and a small suitcase. He was never to return. Now in his mid-forties, he was forced to become a concert pianist in order to support his family.

Performing in England, France, Switzerland and America where he finally settled, Rachmaninov's skills as a concert pianist were legendary. A

formidable pianist, six feet six inches tall and perhaps the greatest pianist of the twentieth century, he possessed a huge hand span. In his left hand from little finger to thumb Rachmaninov could play a chord on the piano spanning 12 notes, 1 ½ octaves, roughly 27 centimetres! He was one of the first composer/pianists to be extensively recorded earning him almost rock star status. He recorded works by other great composers and recorded all four of his piano concertos with the Philadelphia orchestra, an ensemble he felt was the finest orchestra in the world, his Rhapsody on a theme of Paganini, *Symphony No. 3 in A minor*, which he conducted along with his tone poem *Isle of the Dead*.



Sergei Rachmaninov with his wife Natalia

(continued on page 17)



LAKES
HOME CARE
your community
your choice

MILANG
OLD SCHOOL HOUSE
COMMUNITY CENTRE



Lakes Home Care is a community-based Aged Care service for in-home support funded through the Commonwealth Home Support Program and Home Care Package Program

Contact us for a personalised, flexible service designed around your needs, managed locally by the community to be cost effective and responsive.

Call our office at the Community Centre on (08) 8537 0687 or 0488 435 040

www.lakeshomecare.org.au



Clayton Bay Composer of the Month

(continued from page 15)

He collaborated in recordings of violin sonatas of Grieg, Schubert and Beethoven accompanying the great Austrian violinist, Fritz Kreisler and his recital and concert engagements were never more popular. By the mid 1930's Rachmaninov built a house in Switzerland on the banks of lake Lucerne which he called *Senar* where he intended to retire however the increasing political unrest in Europe was to prevent this from happening.

When war broke out in 1939 Rachmaninov permanently settled in America. He continued to compose and give concerts primarily for the war effort and to raise money for the Red Army. He finally bought a house in Beverley Hills California where he composed his *Symphonic Dances* for orchestra Op. 45 which he dedicated to the Philadelphia orchestra. It was to be his last composition. He died on 23 March 1943 shortly before his seventieth birthday. Rachmaninov was the last great Romantic composers. He inherited a mantle that stretches back to Chopin.

Letho Kostoglou

MILANG MERMAIDS

Women supporting women

As women we learn so much from all generations and there is always so much more to learn. Within this group we provide a safe place where we can share and care for each other along this journey called life.

On our journey as women we are often called upon to support others. This group will endeavor to support you.

A place of confidentiality with a splash of FUN

Group held Thursdays 1—3 pm at

MILANG INSTITUTE Supper Room

Cnr Coxe St and Ameroo Ave

All ages welcome

Refreshments Provided

Final date for Term 1—April 14th,

Term 2 begins— May 5th

CONTACT DETAILS

Colleen (08) 8537 0687 0499 373 148

colleen@growinglifeconnections.com.au

growinglifeconnections.com.au/programs/

If you enjoy a good



FILM

The Southern Fleurieu Film Society
a non profit, membership community group

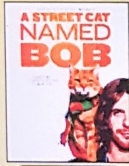
Has released its 2022 programme

To attend, membership information is available
from the Southern Fleurieu Film Society website

sffs.org.au

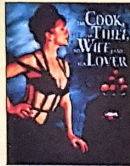
Our first screening is on Feb. 4th. at the
Milang Institute Supper Room
and the first Friday of the month there after.

Feb



PG Mild themes of drug addiction and coarse language

Mar



R18+ Occasional strong violence, sexual violence, some scenes

April



MA Strong coarse language

May



M Coarse language

June



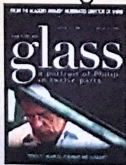
M Mild themes and coarse language

July



M Mild themes and coarse language

Aug



PG Mild themes

Sep



PG Occasional coarse language

Oct



PG Mild themes, violence and coarse language

Nov



PG The content is made in respect



sffs.org.au

Annual Membership only \$50
\$25 if joining after June.

Any enquiries contact John Bradford
on 85 370067 or Michael Tye 0438 800 066
or by emailing mike@michaeltye.com.au

Dec



PG Mild sexual references

Birds in our Area



Apology

The photo in the last Chronicle was not a Fork-tailed Swift. An-

drew Crouch has kindly provided a photo of one (above) that we see on the wing in our area, usually following changing weather fronts.

Black Swans

Many have commented about the number of Black Swans that we have been seeing in local waters. They are nomadic birds depending on climatic conditions with a life span of up to 40 years.

Black Swans are found on brackish waters, ponds, flooded pastures, lakes and sheltered marine waters. They are herbivores and prefer staying in the water to feed on the aquatic vegetation.

Black Swans are symbols of love and prosperity probably because they mate for life. Breeding time is usually between February and September.

The male, a Cob, and female, a Pen, build the untidy nest of reeds and grasses together in shallow water or on an isolated island. Both look after the clutch of 4-8 eggs and the young chicks as they hatch. The young,

Cygnets, stay with their parents for at least nine months.

Black Swans occur in pairs, family groups or large flocks. A big group on the ground is known as a Bank, but when in flight the group is called a Wedge.

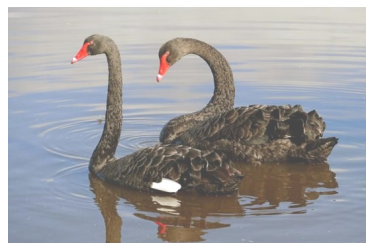
Did you know that there is a Black Swan theory that describes an unexpected event?

It is believed to come from the surprise that European explorers had when they marvelled at the spectacle of Black Swans rising from the water as their boats navigated the Swan River in 1827. Until then it was believed that only White Swans existed.

Duck Shooting Season is on again.

This week I have shuddered in the mornings when I have woken up and heard the gunshots around the lake, and again in the late afternoons, heralding the opening of the duck shooting season.

Check out the issues and campaign to end duck and quail shooting on the RSPCA website. www.rspcasa.org.au/the-issues/duck-hunting/



'Mozzie'

Oil and Acrylic General Painting Mentoring Classes for Beginners & Intermediates

When: 2nd Saturday and 2nd Tuesday of
each month
10:00am to 12:30pm
Cost: \$25 per session; (or purchase block
of 4 for \$100 and get extra class FREE)
Where: 61 Alexandrina Drive
Clayton Bay



Artist: Madeleine Elkin

Classes are limited to 4, so imperative you book your spot.

0401 839 592 | melkin@adam.com.au | www.maearts.com

My name is Madeleine (Madi for short) Elkin and I am a local artist who has lived in Clayton Bay now for the last 4 years. It felt like I was home from the moment we moved in and I have been welcomed into the community with open arms.

Clayton Bay is such a beautiful place, and every day when I take my morning walks I am inspired for my next painting or exhibition series - I have sooo many ideas running around my head! I have been a part of the local community yearly SALA Event held at the Clayton Bay Community Hall, and I also held my debut solo art exhibition "High & Dry" at the Sails Cafe last August 2022. This exhibition was inspired by all the old boats in the front yards of the local's homes, used

as garden features.

After a year of settling in I commenced running monthly general painting classes from my home studio. These are held on the 2nd Tuesday and 2nd Saturday of each month. In these casual mentoring sessions I try to impart the knowledge you need, when you need it, as you progress through your painting of choice, to help you achieve great results.

These classes offer:

- a small friendly group environment which promotes creativity and learning
- individual personal tuition, specific to your painting

(continued page 21)

(continued from previous page)

- learning new tips and techniques arising during class sessions
 - gaining clarity from in-class demonstrations
- discovering how to problem solve and gain confidence in your own abilities

The classes are open to adults of all levels of capabilities and are currently limited to 4 students a session (due to Covid restrictions). This means, currently the classes are mostly full, however, there are often gaps, so it pays to ring and book your spot if you are keen in joining our diverse group of artists.

Hopefully the restrictions will ease more, and I am also contemplating adding a 3rd session depending upon interest - so if interested, be sure to let me know.

My most recent exhibition was "Between Worlds" held during March at The Stationmasters Art Gallery, Strathalbyn. This exhibition showcased my underwater series and was inspired from growing up along the southern coast line and our amazing beaches.

**What's on the radar....drum roll....
"We are going to the Moon"**

As one of the artists who has an episode in "Put Some Colour In Your Life" (Season 21, Episode 11), we will be leaving our creative legacy in a special time capsule to be left on the moon when Eon Musks' SpaceX and NASAs Rover go to the moon in November 2023 to explore the dark side for water.

The South Australian Artists who are a part of this major event, will be holding a joint exhibition in October 2023 to coincide with the launch. We are all very excited about this, and my focus over the next 12 months will be to create some art for the special exhibition collaboration.

If you wish to find out more about my classes, future exhibitions or commission work, please feel free to reach out to me. You can contact me direct via mobile: 0401 839 592 or email: melkin@adam.com.au.

You can also peruse my work via my website www.maearts.com,

Facebook: www.facebook.com/madi.elkin or

instagram: www.instagram.com/madielkin/?hl=en

Happy painting

Madi Elkin

Milang Butter Factory

Archaeological Excavation

Over the past five weeks on a Thursday, a group of residents from Clayton Bay and Milang have undertaken the excavating of the back yard of the Milang Butter factory. Pip Vande Kamp an archaeologist from Milang, Letho Kostoglou an archaeologist's research assistant, Leonie Henderson, Sandy Mulcahy and Chris Williams took up brushes, hand spades and trowels to dig and locate various structures that once existed in the back yard of the Butter Factory.



Above: Willow pattern side plate
Artefacts such as bottles, broken China plates, a 1947 penny and drinking glasses were unearthed just over the fence at the rear of the Milang pri-

mary School oval while in the backyard of the Butter factory itself a double brick cess pit was uncovered filled with a rich array of artefacts.



Above: Double brick lined Cess Pit

The foundations of the old shed, aviary and cow bale were also located providing us with a detailed floor plan record of buildings and structures that once existed but were never captured on camera. The excavation has given us a detailed artefact record of objects dating from the 1880's – 1970's.

Other objects unearthed include perfume and medicine bottles, personal objects such as buttons, children's playing marbles and artefacts specifically relating to the Butter factory such as pulleys, a metal spoon and glass measuring cups.

It is envisaged that artefacts such as cups, plates and bottles unearthed from the Butter factory will, where possible, be re assembled and with other objects form a permanent display on site.

Aerial photographs of the backyard will be captured by a drone, providing an accurate historical record for posterity as the backyard of the Butter factory will soon become the carpark and the structures permanently covered.



Above: Artefacts recovered

I'd like to extend a special thankyou to the Clayton/Milang crew who have given up their time to help excavate this fascinating site and a special thankyou to J. B, John Bradford for giving us the opportunity to excavate the site.



Above: Plate showing maker's name



Left: An old milk can lid

Letho Kostoglou

The Carpet Doctor

Cleaning, repairs & re-stretching

Call Max 0409 692 003

www.thecarpetdoctor.com.au



Hello fellow Claytonites

My name is Ingrid and I am your CBCA treasurer.

Gary and I moved here to Clayton Bay in 2019, to look after and take care of my mum, Greta. Mum and dad built their holiday home in approx. 1980 and moved here permanently in 1990.

Since moving here, I can totally appreciate why mum was sooo reluctant to move and live with us in suburbia after dad passed away. As we absolutely love living here, the peace and serenity is fantastic sitting on the deck in the daytime watching the world go by on our breaks is a delight and especially watching the lightening strike across the lagoon at nighttime is absolutely brilliant, (a lifetime dream of mine.) Love it, and “I get it” mum and dad.

I have volunteered for many a year, firstly as a gymnastics coach for roughly 15 years, then moved to Flinders Medical Centre in the gift shop for about 10 years. To see the sick

and their visitors laugh and smile at my stupidity and warped sense of humor when they were down and out was a joy to behold, as they often told me “I Made their day”.

Laughter is the best medicine, and, yes, I am a goofball and proud of it.

So, here we are in Clayton now. Apart from looking after mum we are also renovating/fixing her house and garden.

On Wednesdays in the community hall, from 12-2pm, we can enjoy coffee and wonderful home made muffins and just talk about life or whatever takes your fancy with wonderful fellow folks. Mum wanted to play Rummykub so I started a games session to coincide with this. I actually got out of my comfort zone and approached total strangers to join us for games and it worked, happy us, if you don't ask, you don't get! So let it be known that if you desire coffee/tea and cake, or play a board game please come along and have some fun. More people, more games!

On Thursday mum had a keep fit class, but after 18 years, just this

Christmas break, she stopped being up front, so she put me there, thanks mum! And that's how I became treasurer—due to the constant haggling of a fellow keep-fitter to become a member of the CBCA committee. (I wanted to and she knew it, but I didn't know how to so she held my hand. LOL) So I became a member—Thank you.

I soon learnt that they were in need of a treasurer, forever the gullible, I agreed, I thought it would be ok—you know a bit of brainwork in a totally different area to my norm.

What an experience—learnings and the rest—I'm not a computer person, it really put a spin on my brain,

ouch!!! But I am totally enjoying it, with the help of Myra, of course, and I am hoping to continue for many a year.

So, if there are any wonderful people out there who are willing, or like me and too scared to make a move, come and join us, as I had absolutely no idea that these few people put sooo much effort into making things possible, and also, it's a wonderful feeling to know you are doing your bit for the community. I am thoroughly enjoying it and proud to say I am a committee member. We can all help to continue to make Clayton Bay a wonderful place to call home.

Ingrid Owens, CBCA Treasurer

AED

Automated External

Defibrillator

Located at the Clayton Bay Boat Club

Under the Veranda

*In an Emergency Call **000** first*





The southern bell frog (*Litoria raniformis*).

The southern bell frog was once so common in south-eastern Australia that no one paid it much notice. It is a large frog with bright green markings which is sometimes visible basking in the sunshine near wetlands.

In the late 1970's a researcher from the Australian Capital Territory announced that southern bell frogs had disappeared from the ACT. Researchers across Australia conducted similar surveys and all came to the same conclusion, this species was in rapid decline throughout its range. In 1991 this species was declared Endangered.

Five years later south-eastern Australia entered the worst drought on record, the Millennium drought. This climatically dry period persisted for over a decade resulting in dramatically decreased rainfall and river

flows in the Murray-Darling Basin. At the time there was no legislation to limit the amount of water that was extracted from the river and water use increased in many cases. During the drought southern bell frog populations collapsed in many areas of the Murray-Darling Basin.

With the return of flow, southern bell frogs made a modest recovery in the Riverland but south of Morgan populations did not recover. Today, this species no longer occurs along the 200 km of river channel south of Morgan.

But a group of Clayton Bay locals have decided to remedy this. We have constructed a purpose-built facility on the Clayton Bay Nursery and Environment Group grounds. We have collected southern bell frog tadpoles from large populations in the Riverland and transported them to Clayton Bay. These tadpoles are now adult frogs.

We currently have 14 adult frogs of various ages and the oldest frogs will reach sexual maturity later this year. We are all very hopeful that we will

(continued page 27)

The southern bell frog (continued)

see our first breeding event this October. If successful, the tadpoles will be raised at Clayton Bay until metamorphosis (when tadpoles turn into frogs) and released in the local area. We will start by releasing at select wetlands between Currency Creek and Tolderol Game Reserve and once these populations are established, we will broaden release area. Our

goal is to re-establish this species throughout their former range in the Lower Murray River.

This is the first in a regular series in the Clayton Bay Chronicle where we will aim to keep you informed of our progress and take you along for our journey to save an endangered species.

Rupert Mathwin
Freshwater Ecologist

Our Local Gum Trees

Gum Tree is a common term to describe trees of the Eucalypts family which includes the genera of Eucalyptus, Corymbia and Angophora. Only Eucalyptus and Corymbia are found in SA, and only the former naturally occurs in our district. Therefore any reference here to Eucalypts means Eucalyptus.

Eucalypts are broadly categorized according to overall form (shape), and bark features.

True gum trees have smooth bark on the trunk, but sometimes with rough bark extending a short distance from the ground. Right is a Pink Gum

which is plentiful north of Clayton. The height can vary from stunted to tall. The other local smooth barked tree is River Red Gum. Only a few can be found near the edge of the lake. Other tall Eucalypt bark types don't occur naturally in this area.

Gerry Thompson



The History of Clayton Bay

Part Two

Arrival of Europeans

From 1810, European presence began to be felt throughout the Fleurieu peninsula. Sealing and whaling parties were prominent but it wasn't until Charles Sturts famous expedition of 1830 when Lake Alexandrina was named that the region came to the attention of European settlers.

In 1836 the colony of South Australia was proclaimed and in anticipation of Europeans wishing to settle on traditional Ngarrindgeri lands King William IV and the British Government issued the *Letters of Patent* which granted the Ngarrindgeri all the rights and privileges as other individuals of the colony. The letters of patent stated that settlers in the region were meant to extend treaties to the Ngarrindgeri for the use, purchase and occupation of land and waters. These sadly were never upheld or properly enforced.

In 1853, the township of Clayton was officially surveyed and a description

of the town appeared in Baillieres's South Australian Gazette in 1866 boasting a population of six people although there was a considerable farming population throughout the area. By 1858 the town plan of Clayton included a port as it appeared on George Moore's survey map. James Rankine, the resident magistrate, was one of the first settlers to purchase land in the area which included not only the town of Clayton but most of Hindmarsh Island as well. The closest area between Clayton and Hindmarsh Island was to become known as Rankine's Ferry as they used this location to transport cattle stock from Clayton to Hindmarsh Island. The Rankine's had houses at both locations.

In 1859, surveyed allotments first appeared for sale and quite a number were purchased. By the 1860's, Clayton possessed a general store, post office and a blacksmith shop. A jetty was built for boats and barges to load and unload goods and it was located west of the *Gloria Jones Reserve* now, permanently under water.

On 11th of November 1863 the Colonial Secretary approved the opening of the Clayton Post office which was located on the corner of Rankine and Chandos Street. When contractors were called to take on the Milang to Clayton mail delivery the contract was won by James Gilbert. Deliveries commenced on 1 January 1864 and the contract price per annum was 19 pounds and ten shillings! Gilbert delivered the mail twice a week on horseback until 1867 then three times a week until 1868.

There are not many remnants of original dwellings that have survived in Clayton Bay into the twentieth century and beyond. The first building in Clayton that was erected was a stone cottage owned for a considerable time by James Tate Williams whose occupation was that of a duck shooter. Although he had a house in North Adelaide on weekends and holidays he would ride his bike to Clayton to partake of fishing and shooting!! The *Duck Shooter's cottage* is still standing in Chandos St although a modern structure abuts the original stone structure. At one

point in time a Regional Development Pty Ltd purchased a parcel of land, what is now Clayton Bay Estate with the intention of establishing a Country Club! The club was never established as the existence of various dwellings on the estate testifies.

Compiled by **Letho Kostoglou**

DID YOU KNOW?

Our Local Gum Trees

There are many species of mallee trees in the district all with striking features.

These have multiple trunks from ground level and a large woody ligno-tuber at or below ground level from which it re-shoots if the crown is destroyed. They often have bark hanging in strips with some rough bark at the base.

Gerry Thompson





Nestled on the shores of a picturesque bay, surrounded by trees and abundant birdlife, Clayton Bay Riverside Holiday Park is a tranquil, relaxing tourist destination.

Accommodation options Contact Danny and Claire

- ◆ Powered sites
- ◆ Unpowered sites
- ◆ Retro onsite vans
- ◆ Luxury Boatman's Cabin

Tel: **08 8537 0372**

Email: **info@claytonbayrhp.com.au**

Website: **www.claytonbayrhp.com.au**

Address: **Island View Drive,
Clayton Bay SA 5256**



Follow us!



All mowing & gardening services in Clayton Bay & Milang

Lawns & blocks mowed/slashed, pruning, spraying, chainsaw work, revegetation,
garden maintenance & watering, bushfire prevention clean-ups

Holiday homes/domestic/business

Local family business since 1997

041 12 37 248

Clayton Bay Community Garden

Growing fresh produce and a strong community

Exciting changes underway in the community garden! Volunteer artists, creatives and experimenters welcome to come and join in!

An art project has begun, decorating the garden beds with illustrations and quotes. This project seeks to encourage reflection, discussion, and more community involvement in the Clayton Bay Community Garden. KJ, a local illustrator, and Jenene, Community Garden Coordinator have begun the project, and other community members are encouraged to join in.

Over the winter, the illustrations will be completed and coloured in. **If you would like to try your hand at colouring in a carrot or drawing a radish, join the community garden volunteer team on Tuesday and Thursday mornings.** And don't forget to join in on the legendary Tuesday volunteer morning tea while you're there!

If you have them, bring leftover paint

and brushes to complete your handiwork. To support this project, **all donations of water based paint and old brushes will be gratefully received.** Otherwise some paint will be available for volunteer artists to use.

KJ



Local Plumbing & Gas Fitting

Reliable ~ Friendly ~ Affordable

- After Hours Emergency
- All domestic plumbing repairs
- Hot water - Repair/Replace
- Gas Fitting - New/Existing
- Rain water & pumps
- All marine & mobile homes

Call Andy or Jay:

0408 807 212

Alexandrina Plumbing / Lic. 4925

F6127



Self Help Yoga Clayton Bay
Keep Active ... Stay Strong
Thursdays at the hall 5.30-6.30pm
Gold coin donation

Basic Yoga experience is desirable as there is no trained instructor present.



All aspects of electrical with 15+ years of experience.

Domestic, Commercial, T.V., Audio, Data & Phone

Just give us a call.

Leigh: 0410 798 001

Lic: PGE275884

Email: Leighaustinelectrical@outlook.com

Find us on
Facebook



ABN: 20525154262

A Little Bit of Venice in Goolwa – Again!

Planning for this year’s Vogalonga Down Unda (VDU), scheduled for Sunday April 24th, is progressing well.

For those unfamiliar with the VDU, it is a not-for-profit and non-competitive paddling/rowing regatta for any type of water-craft powered solely by human endeavour. (See video <https://fb.watchallIDSpODcil>). This ‘fun run’ on water is an opportunity for participants to experience the Lower River Murray in a safe and enjoyable manner while bringing attention to the ecological health of the area.

Cittaslow Goolwa can rightfully be credited with the birth of the VDU with its sponsorship and auspicing of the inaugural event held on the 4th October 2020.

A warm invitation is now extended to the community to join us on this fun day as...

A *PARTICIPANT* – Register at the website—

www.vogalongadownunda.net.au.

You don’t need your own craft as kayaks and canoes are available for hire at special mates’ rates (\$45 for double kayak; \$35 for single kayak).

Contact Brenton at -

canoethecoorning@gmail.com. Say it’s for the VDU and it will be available at the Goolwa Aquatic Club on the day.

OR

as a *SPECTATOR* – You can view the regatta at various observation points along Liverpool Road, the Goolwa Wharf precinct or in the vicinity of the Goolwa Aquatic Club.

And while you’re there, look out for a Venetian-style boat being rowed

Venetian-style!

DO YOU HAVE AN ARTICLE FOR THE CHRONICLE?

Humorous – Heartwarming – Unbelievable

Does someone or something you know deserve a bouquet or brick bat?

Email your articles to chronicle@claytonbay.org.au

(All submissions published at the discretion of the Editor)

River Lakes and Coorong Action Group Incorporated

The River Lakes and Coorong Action Group (RLCAG) is an independent community organisation which formed in 2006 to stop the State Government building a weir below Wellington. The organisation incorporated in January 2007 to:

- protect, conserve and enhance the biodiversity of the River Murray, Lakes and Coorong;
- liaise with appropriate bodies over the management of the River Murray, Lakes Alexandrina and Albert and the Coorong, and their immediate surrounds; and
- provide information for the community

Membership is open to everyone

who is interested and includes community members, fishers, farmers, scientists, artists, environmentalists, tourism operators and business people.

To find out more about what this group does visit their website or Facebook page. www.rlcag.org.au

www.facebook.com/RLCAG

Clayton Bay Rainfall 2022



Jan	23.0 mm
Feb	6.6 mm
Mar	7.6 mm

Total to date 37.2 mm

(March 2021 total 13.4 mm)



Walking Group

Walking group
Fridays—Meet at the
hall at 9.00am for a
brisk hour walk around
the walking trail.

Free

Sparkling Mermaid Tails? What is this all about. See page 17 to find out more about Milang Mermaids.



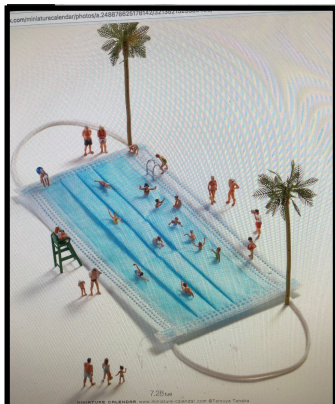
Above: The box-bark mallees have rough bark that forms tight chunks. They can either have persistent rough bark throughout or have deciduous smooth bark on the upper trunk and limbs. This is the latter, a Peppermint Box, found along the Finniss Road north of Kindaruar Road. Other bark types such as stringybark and iron-bark don't occur naturally in this area.

Gerry Thompson

(See "Our Local Gum Trees" on pages 27 & 29)



Above: See page 13



Above: What happens to Covid masks?



Above: Archaeological dig at the Butter Factory Milang. Pages 22, 23.



Left: Regina, John and Rupert. Southern Bell Frog Project—Volunteer of the quarter award. Read about this project on page 26.

Below left: Community Garden project. Page 31.

Below right: Vogalonga. Page 33

