

# Clayton Bay Chronicle

Summer February 2022 \$2.00



**CLAYTON BAY CHRONICLE – SUMMER 2022**

## President's Corner

Welcome to the Summer edition of the Chronicle. I hope that you have had a relaxing and enjoyable Christmas/New Year holiday break and that you have not been too inconvenienced by the always changing and sometimes challenging conditions that Covid brings with it.



We were thrilled to be able to hold our Retro themed dance in November with Roxy Music providing the music that had us all (well, most of us!) up on the dance floor all night. A huge shout out to Sandy and her team for once again providing outstanding decorations that transformed the hall for the night. Thanks to Ruth for organising the ticketing, too. There have been a number of calls to hold another dance and Sandy is again keen to help make it happen, so pencil 1 April into your diaries and keep a lookout for details in the next few months.

We've not been so fortunate with another CBCA event, the Australia Day Breakfast, that is usually held at the Boat Club as a fundraiser for our CFS. The CFS volunteers usually cook the bbq and given that they are temporarily suspended from attending their trainings to reduce their chance of contracting Covid, we decided to take our lead from them and cancel the breakfast in the interests of helping to keep our wider community safe. The CBCA committee is starting to think about a "Not the Australia Day Breakfast" fundraiser for a future date.

Do you have your copy of the 2022 Clayton Bay calendar? New resident Margaret Heathcote offered to produce it and she used Andrew Crouch's bird photos to highlight the variety and beauty of our local birdlife. Thankyou Margaret for your hard work. You can buy calendars from our local Postal Agency. At long last, the veranda and pergola upgrade is due to begin in early April. Birchwood Constructions are the builders and work is expected to take about six weeks. Best wishes for the year ahead.

Ginny Edgerley

President CBCA

### Diary Dates

Friday 1 April

#### BEACH PARTY DANCE

Clayton Bay Community Hall. 7.30 pm

Sunday 6 March

#### Riverlakes & Coorong Action Group AGM

Clayton Bay Community Hall



### **Christmas Carols in Clayton 2021**

In the true spirit of Christmas, members of the Clayton Bay community once again gathered on Christmas Eve for family carols. This community driven event, hosted at the Clayton Bay Boat Club, was proudly supported by the Clayton Bay CFS and members of the local community who volunteered their time, expertise and voices to ensure an amazing night was had by all. Despite COVID keeping everyone at home, the event was well attended with approximately 50 people (all responsibly socially distancing outside under the veranda) joining in the frivolity!

Highlights of the evening included the interactive version of the 12 days of Christmas, where each table held up cards for each day; the audience driven program – with family groups selecting which songs to sing next; and of course, the ‘Big Man’ himself who made a special appearance via boat to distribute gifts and lollies. An enormous thanks to everyone who made this event happen, especially sound master Chris Selwood, singers Natalie Perkins and Helen Waghorn, behind the scene miracle workers Leonie Henderson and Gloria Jones, Chris Williams and the CFS, and Grant Madden and the Boat Club Committee with a special mention to Sian Steele at ‘Ink and Thread’ for making the signs for us.

**Natalie Perkins**





## Clayton's Christmas 2021

If you drove or walked around Clayton Bay over the Christmas season you may have noticed wooden Christmas trees appearing in people's front yards. People were encouraged to get into the spirit of Christmas by having a tree in their yard and over 100 trees were erected.



Thanks to a team of volunteers trees were made using wood from pallets, wooden bed bases, old decking, wine staves – whatever was available! Thanks to the dedication of David and Yvonne, Rod and Tina, Eric and Sue, Bob and Deb, Kevin and Leonie, over 80 trees were made so that those who didn't have the time or skills to make their own, could purchase a tree for their yard.



In the weeks leading up to Christmas, trees began to appear and the decorations showed that some were thinking outside the square! As night

fell, the solar lights on some of the trees transformed them.

You may also have seen the trees, donated by the Alexandrina Council, at the hall, shelter shed and entry statement. In keeping with other council area towns, Merry Christmas signs were also erected on stobbie poles.



Keep your trees for next year as it is hoped that this will become a Clayton Bay tradition and that there will be more trees around our community – maybe even a few forests may happen!

Leonie Henderson



CLAYTON BAY CHRONICLE – SUMMER 2022



The Clayton CFS Brigade wishes to acknowledge and pay its respects to Louise Hincks, and to send our love and support to her family. Louise was a passionate, loyal, and dedicated member of the Happy Valley Brigade who tragically lost her life at the Lucindale fire on the 21st of January 2022. Many in our group knew Louise, and she has been described as “the backbone to everything, and a light to everyone” from a member of her own brigade. Louise served with the CFS for 28 years, holding roles of both firefighter and finance officer at her home brigade. Both the Country Fire Service and the CFS Foundation have reached out to Louise’s family to offer support.

The incident at the Lucindale fire is a reminder to us all of the potential dangers that our job brings. The nature of our role is to move towards incidents of disaster and emergencies bringing with it certain hazards and potential dangers to ourselves. We do this because of a love for our communities, our region, our state, and our country.

It was moving to witness the guard of honour spanning more than 200 kms from Keith to Adelaide. The Country Fire Service is often described as a big family, and this was highlighted by the many groups and brigades sending trucks, volunteers and staff to certain points along the highway to give tribute to Louise and support the procession that included a CFS command car and her home brigade’s Happy Valley truck.

Something I love about being a CFS firefighter is the friendships and camaraderie that the members of our brigade in particular have, and with CFS members as a whole. Sitting in the truck on the way to an incident, it is comforting to know that the other three or four firefighters in the truck always have your back, and that we all protect each other. Not only that, we know that when we get to that incident, most often there is another CFS truck on its way to support. For us, it is often the Milang Brigade who we also have a wonderful camaraderie with. We are blessed with wonderful people in our brigade and group, and I am personally thankful for what I have learned already from the senior members of our brigade.

Many blessings to all.

**Ben Chudleigh, Firefighter**

**CFS Clayton Brigade**



## Clayton Bay Community Hall

Veranda project update. Dec 2021

Hello everyone.

We hope everyone had a wonderful Christmas and said goodbye to an interesting, to say the least, 2021. Our family is looking forward to 2022 and a chance to gather together again. In early December Alexandrina council gave its final approval for the veranda build to proceed which was long in coming and gave the committee a good deal of excitement.

The builder has been chosen and has met several Committee members onsite to go over the final drawings and any last-minute changes necessary to maintain control of the budget. Due to the long delays in obtaining building permission from Council, the builder has taken on other works and is booked up until April which is six weeks later than we hoped. Never-the-less it is progressing.

COVID 19 has also had an impact on the build, as many will know, the pandemic has created a severe shortage of building materials. This extra lead up time will allow the builder to gather all the materials he needs for the construction which he expects will take two weeks from commencement. This committee has been excited by the positive support for the project from the overwhelming majority of the townspeople, for which we are very grateful. If you do have a different point of view however, don't hide in the shadows send me a message or leave a note at the post office, you can remain anonymous if that is your preference.

Similarly, with the proposed expansion of the Caravan Park and the Boat club The Community Association encourages everyone to gather facts directly from those two groups rather than from unsubstantiated sources, speculation or gossip.

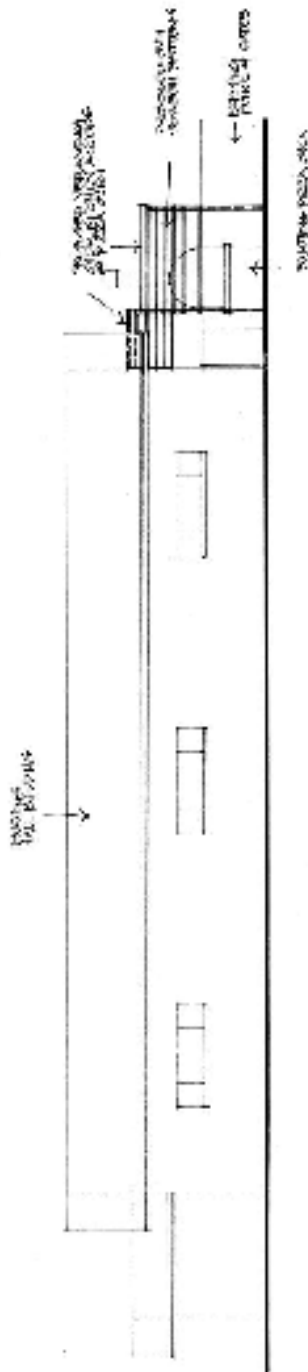
Back to the build. This will see the near full-length veranda constructed along the eastern wall, a new pergola built over the pizza oven and provision for a shade sale in front of the pizza oven. As we said earlier in the project this is a huge job. The only task for us to do will be the painting. Due to the project's cost, we are going to complete this in two stages, it is simply not practical or financially feasible, to do the whole project at once.

The first is the build obviously and the second will involve the paving. We have the plans for the paving which have been on display in the hall and everyone has been encouraged to comment on and make suggestions, we will review these once the structure is up. At this time, we can obtain quotes from local contractors and look again at grant funding to cover the paving costs. As you know it is a large area, nearing 100 square meters, and will require considerable earth works to prepare the site ready to pave. In the end, the community will have a large undercover, all-purpose area with easy access for all to safely move about, which is what was discussed and agreed to at the two town meetings we held during the year. As always you are welcome to contact your committee members to discuss any or all aspects of this project and we would welcome hearing from anyone who has a comment or is interested in being involved in the decision making on any aspect of this project.

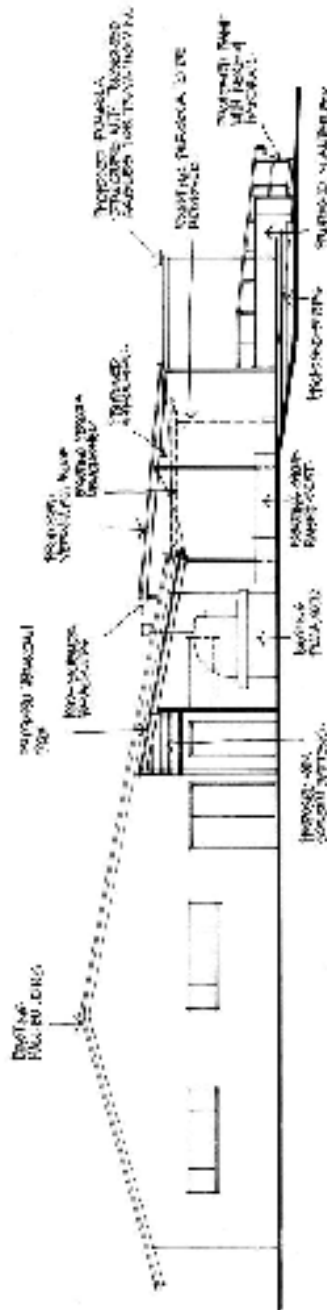
Mike Daw

CLAYTON BAY CHRONICLE – SUMMER 2022





WEST ELEVATION 1/20/22

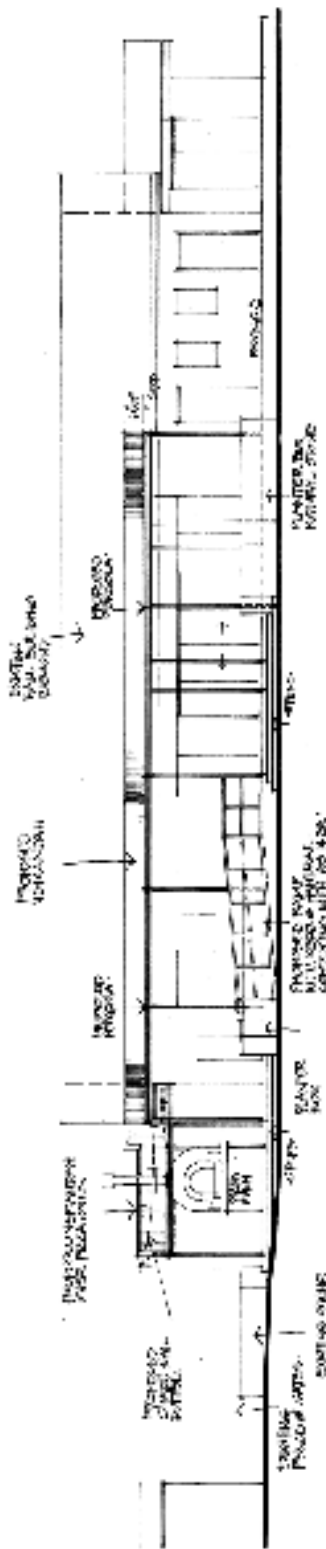


SOUTH ELEVATION 1/20/22

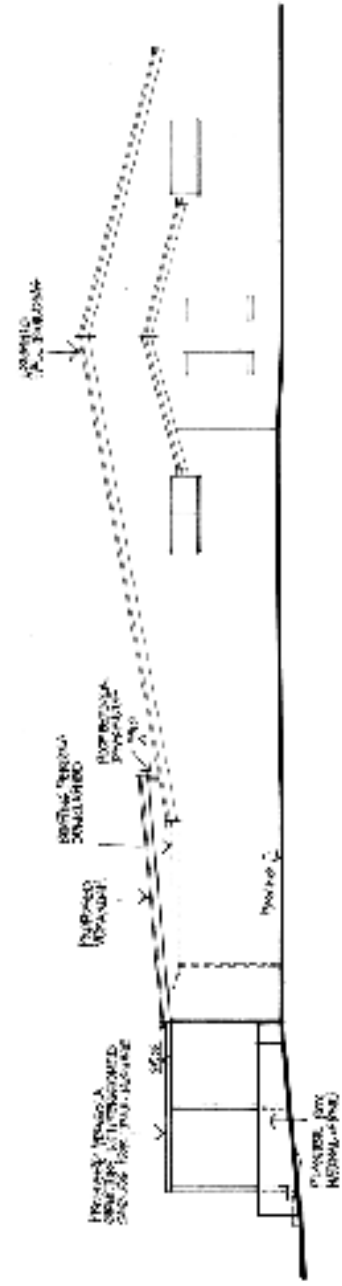


**HA** Holiday Design & Drafting  
 P.O. Box 51 Tallent Marsh Rd. 21512 29776  
**PROPOSED VERANDAH, PAVING & LANDSCAPING TO BRISTING HALL AT 6 ALEXANDRIA DR, CLAYTON BAY FOR CLAYTON BAY COMMUNITY**  
 SCALE: 1/8"=1'-0"  
 DATE: 10/11/2022  
 DRAWN: MK/PL/BJK  
 CHECKED: MK/PL/BJK  
 PROJECT NO: 22-001





**EAST ELEVATION** 1/100 (18)



**NORTH ELEVATION** 1/100 (19)

**AD** Holliday Design & Drafting  
 PO Box 81, ALLEN BEND ON 84779-081  
**PROPOSED VERANDAH, PAVING & LANDSCAPING TO EXISTING HALL AT 6 ALEXANDRIA DR, CLAYTON BAY FOR CLAYTON BAY COMMUNITY**  
 SCALE 1/100  
 DATE MAY 2, 2022  
 DRAWN MIK HOLLIDAY  
 CHECKED JESSICA KLEIN  
 DRAWING NO. WIG



**All aspects of electrical with 15+ years of experience.**

**Domestic, Commercial, T.V., Audio, Data & Phone**

**Just give us a call.**

**Leigh: 0410 798 001**

Lic: PGE275884

ABN:  
20525154262

Email: [Leighaustinelectrical@outlook.com](mailto:Leighaustinelectrical@outlook.com)

Find us on  
Facebook



Walking Group

**Walking group**  
Fridays—Meet at the  
hall at 9.00am for a  
brisk hour walk around  
the walking trail.

**Free**



[We Love it Here!](#)

Hello to all CBCA Members,

Everyone at the Boat Club hopes ya'll are keeping fit and well. .

Over the last few months, we enjoyed a number of activities and events including:

- **Bingo Night**  
Who knew that numbers could be so much fun!



- **Christmas Carols by the Bay** – With that special person spreading cheer and good will.



- **New Year's Eve** – A quiet evening at the Club and exciting for the 9 boats that ventured down to Goolwa for the fireworks.

- **Flying 15 & Farr 6 – Single Design Regatta (1-3 Jan 22) –** Held over the New Year's long weekend, this Event saw Flying 15's and Farr 6's racing in the Bay. A great social event with competitors from Queensland, Sydney and South Australia.



- **Kingsley Picnic Race Weekend at Mike and Cecily South's farm / marina** saw 18 boats doing a Stern Chaser from CBBC to Kingsley on Saturday, an overnight rest-up with the "campers" and a Stern Chaser back to CBBC on the Sunday. Many thanks Mike and Cecily.



- **Pirate Day –** This event has been deferred until the "Little Pirates" vaccination rates catch up with the "Big O'I Pirates".
- **Milang – Goolwa Freshwater Classic – 23 Jan 22 –** The Club was well represented in this year's race. Long, wet and slow but interesting to watch – from the Clayton Cliffs as usual. Congratulations to the CBBC place holders:
- - Craig McPhee and crew – Div 2 – 3<sup>rd</sup>
  - Adrian and Maryanne Schilling – Div 4 – 3<sup>rd</sup>
  - Justin and Darren Stanbridge – Div 5 – 1<sup>st</sup>
  - Mike and Cecily South – Div 5 – 2<sup>nd</sup>

Well done everyone and all the other CBBC participants.

- **Australia Day 2022 –** Unfortunately the CFS Australia Day Breakfast was yet another COVID casualty – we're looking forward to liaising with the CBCA for a suitable event later in the year. An impromptu raft up of around 10 CBBC boats near Boundary Creek was a great way to cope with the heat and celebrate the day.





Summer 2021-22 - While the weather has been variable cruising Members are still planning overnights and day trips. A mini-River Ramble, from Waikerie is schedule for late April to help finish off the autumn season and includes trailer yachts, cruisers and a house boat.

Clayton Bay Boat Club - Community Consultations – Thanks to everyone who participated in the Community Consultation for the CBBC Application for a Lease Area Extension. The Alexandrina Council is expected to vote on the application at its next meeting in February. COVID 19 restrictions and conditions remain in place with appropriate signage. Also, please remember to do a QR Code check-in or paper check-in if you're visiting the Club.

Stay safe, active and informed through the CBBC Log ([Here](#)) .

Kind Regards

Ric Kies

Secretary - Clayton Bay Boat Club

**Local Plumbing & Gas Fitting**  
Reliable ~ Friendly ~ Affordable

Call Andy or Jay:  
**0408 807 212**  
Alexandrina Plumbing / Lic. 4925

- After Hours Emergency
- All domestic plumbing repairs
- Hot water - Repair/Replace
- Gas Fitting - New/Existing
- Rain water & pumps
- All marine & mobile homes



**LAKES**  
HOME CARE  
your community  
your choice

**MILANG**  
OLD SCHOOL HOUSE  
COMMUNITY CENTRE



Lakes Home Care is a community-based Aged Care service for in-home support funded through the Commonwealth Home Support Program and Home Care Package Program

Contact us for a personalised, flexible service designed around your needs, managed locally by the community to be cost effective and responsive.

Call our office at the Community Centre on (08) 8537 0687  
or 0488 435 040

[www.lakeshomecare.org.au](http://www.lakeshomecare.org.au)





## **Eucalypts in the Clayton area**

The ecology of the Clayton area can be described as tall shrubland, extending northward to the Milang – Finniss Road, with woodland towards Winery Road, grassland to the immediate north and east, and coastal succession past Milang. There is a scattering of River Red Gum along the Lake edge. The mix of plant species in any location reflects the soil type, rainfall and hydrology of an area.

Of the approximately 800 species of Eucalyptus species found in Australia, 100 are endemic to South Australia (Dean Nicolle, 2013), about 15 of which may occur naturally near Clayton. Most of those occur in the shrubland. These are the mallee species of Eucalyptus.

Mallee species are characterised by a large, woody, subterranean growth - the lignotuber or "mallee root". This provides a store of starch and potential sprouts which can emerge in the event that the tree is destroyed.

Mallees are the most widespread tree of the semi-arid zone of SA. Dense mallee shrubland once covered the plains between the Lake and the eastern foothills. The aboriginals called it "Nurragi" meaning "low scrub". Now only about 2% of this original vegetation remains in this area. Closer to the Strathalbyn – Victor Harbor railway line can be found the taller Pink Gum, Peppermint Box and Blue Gum trees of the woodlands. The tall shrubland around Clayton has largely disappeared. (Some unusual Eucalypts in Clayton may have been planted.)



**Pink Gum woodland**

A good place to see the transition of woodland to tall shrubland, then to grassland, is the nearby Nurragi Conservation Reserve that was formerly the Sandergrove to Milang Railway. The reserve is a long, narrow north – south corridor traversing three vegetation formations that occurred between Strathalbyn and Lake Alexandrina. At the northern end are the statelier pink gums and blue gums of the woodlands, transitioning into the mallee-dominated, tall shrublands, with the presence of scattered native pines near the Milang Finniss Road. It reaches the grassland and coastal vegetation on the approach to Milang. Some of the remnant vegetation remained and much has been revegetated over 30 years.

**CLAYTON BAY CHRONICLE – SUMMER 2022**

On my property on Kindaruar Road I have identified six species of Eucalyptus; five of which are mallee species. Half of my property is an open pink gum woodland with some old Sheoak trees, and the remainder is tall mallee shrubland. Two kilometres to the east is Black's Scrub which has a different plant community as a consequence of the deeper sands.



**Tall shrub land**

The natural distribution of Eucalyptus in SA has some species that only occur in the high altitudes of the eastern states. These are outliers of large populations that were disconnected by land clearing. There are Snow Gums in the lower South East, the stately Mountain White Gums in the central Adelaide Hills, a small group of Southern Blue Gums near Mt Bryan, and Red Stringybark near Seven Hills. All of these reflect very different conditions from those at Clayton, and are worth finding.

Nicolle, D. "Native Eucalypts of South Australia", Lane Print and Post, Adelaide. 2013.

Gerry Thompson



**All mowing & gardening services in Clayton Bay & Milang**  
Lawns & blocks mowed/sashed, pruning, spraying, chainsaw work, revegetation,  
garden maintenance & watering, bushfire prevention clean ups  
Holiday homes/domestic/business  
Local family business since 1997  
041 1 2 3 7 248



## SOS Clayton Bay Children's Camp

My last article for the chronicle was so long ago you could be forgiven for thinking that we have forgotten you! And I cannot even blame Covid! Reviewing that edition, I reported that we were embarking on a renovation program for our camp with a forecast cost of \$75,000. If only! What was then forecast as a renovation, in fact developed into a major overhaul of the entire infrastructure at a total cost – WAIT FOR IT – on the wrong side of a quarter of a million dollars. And that figure would have been even higher it was not for the support of our principal contractors, Tim Roberts and Steve Bowen, and the 'hands on' work of our new President, Peter Watson, and his family. So – what have we done:

Cleared nearly an acre of the North-Western corner of the camp of its dense scrub which was not only a severe fire risk but a haven for swarms of mosquitoes and laid fully water reticulated lawns of some 3500 sm. Reclad all of the external and internal walls of the main kitchen/dining/bunk rooms and replaced all of the old Laminex kitchen benches and cupboards with new stainless-steel benches, food preparation tables, and shelves.

Replaced all the refrigerators and freezers, and stoves, with new units and renovated and repainted the five bunk houses. All the old wooden bunk units have now been replaced with new steel units. Rewired all the electrical switch boards and wiring. In addition, laid new roads and pathways with quarry rubble including new timber borders and recovered the original 'beach' area adjacent to our jetty for swimming and canoeing. Also, the original Sarah home to the North of the back gate has been completely renovated.

Finally, we've purchased a heavy-duty Kubota ride on mower/slasher to maintain the waterfront areas and the over the last few months, we have 'test run' several camps with nearly 300 school campers resulting in excellent 'feedback' reports, which have all highlighted the wonderful lakefront ambiance of our camp.

All of this has hallmarked SOS Kinderdorf International's first 25 years in Australia. Those 25 years have not been without drama with the forced closure of our traditional SOS Village at Seaford Rise due to bureaucratic refusal to let us practice our SOS Village model founded 72 years ago on the principle that every child deserved the love of a mother, with siblings, in a safe and secure village home. Never mind the reality that this model has been so successful in 132 countries, with:

- More than 400 Children's Villages, 350 Youth Centres, 260 Kindergartens, 190 Schools
- 470 Training & Social Centres, and 75 Medical Centres & Relief Programs.

The SOS Australia Board has given some thought to opening our camp to the Clayton Bay community for a 'show and tell'/sausage sizzle day if there is sufficient support for the idea. Perhaps you could let us know via email – [sos@sos-australia.org.au](mailto:sos@sos-australia.org.au).

Ellis Wayland AM RFD ED

Secretary, SOS-Australia.

**CLAYTON BAY CHRONICLE – SUMMER 2022**



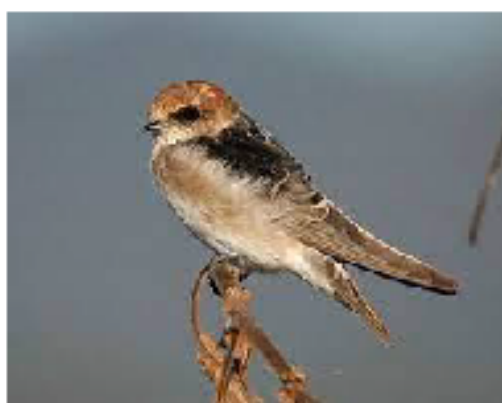
## Birds in our Area

### Fairy Martins and Fork-tailed Swifts

These last couple of weeks in January have been very hot and humid. Good chance to watch the tennis with the air-con on. A couple of days ago the dog dragged me away from the tennis to go outside for a while. A large weather front was moving across the Lower Lakes towards the Murray lands.

I was amazed by the aerial display of a large group of Fairy Martins as far, and as high, as the eye could see.

Fairy Martins are similar to Welcome Swallows. They have more white plumage and their tails are square rather than forked. They are summer visitors to this area and are often seen with the Welcome Swallows.



I was quite mesmerized by their movement when I realised that there were a couple of slightly bigger birds with longer, pointier wings soaring with the Fairy Martins.

They had to be Fork-tailed Swifts! Confirmed by a quick check with binoculars and a look in the field guide. As well as their long-tapered wings Fork-tailed Swifts have a long fork tail with a white rump.



They are aerial insectivores and fly faster than Swallows and Martins with more gliding and soaring.

They migrate from NE Asia from Oct - April where they breed on rock ledges and cliffs.

I have only seen them a few times following changing weather fronts. It fascinates me that they are always aerial except when breeding.

Finally, a message I have on a magnet from Birdlife Australia. . .

*"When you're hot, they're hot!"*

*"Please put fresh water out for birds!"*

"Mozzie"

Jan 2022

CLAYTON BAY CHRONICLE – SUMMER 2022

## AFTERNOON TEA RETURNS TO CLAYTON BAY



Afternoon tea at the hall recommenced on Wednesday 2nd February from 12 to 2 pm. Come along and have a chat, meet or catch up with others from Clayton Bay while enjoying a cup of tea or coffee and Pat's famous homemade muffins. (Bring your small change to make a donation.)

From humble beginnings in 2021, this has become a popular social occasion for residents who come to collect their mail from the Postal Agency and stay on for a cuppa. You can also join in and play, or learn how to play, Rummikub, Rummy King or you may prefer to bring along your own game for others to learn how to play!

## Oil and Acrylic General Painting Mentoring Classes for Beginners & Intermediates

- When:** 2nd Saturday and 2nd Tuesday of each month  
10:00am to 12:30pm
- Cost:** \$25 per session: (or purchase block of 4 for \$100 and get extra class FREE)
- Where:** 61 Alexandrina Drive  
Clayton Bay



*Artist: Madeleine Elkin*

***Classes are limited to 4, so imperative you book your spot.***

0401 839 592 | [melkin@adam.com.au](mailto:melkin@adam.com.au) | [www.maearts.com](http://www.maearts.com)

### "Between 2 Worlds"

exhibition by artist Madeleine Elkin

Where: Stationmaster Gallery, 20 South Terrace, Strathalbyn

Dates: 26th Feb to 30th March

Gallery Opening Times: 10am to 4pm (7 days)

There is no official Opening Night, however, I will be doing 2x Meet the Artist on Sunday  
27th February and 13th March 1.30 to 3.30pm

## FLEURESSENCE

Curated by Local Clayton Bay Artist Samuel Mulcahy

From Friday, February 11 - Monday, March 14.

**Colour demands attention. It can be tranquil and turbulent, calming and jarring. It can be meaningful or without moral intent. Fleurescence presents a colourful mix of characters to complete a full spectrum. Come and see where you fit in.**

**A group show of fourteen artists both local and interstate.**

**Hayley Arjona, Kurt Bosecke, Isobella Brown, Anna Goodhind, Seraphina Grace, Anton Hall, Hari Koutlakis, K J Hepworth, Kaspur Schmidt Mumm, Kelly Reynolds, Jake Rollins, Henry Jack Walker, Westhepants and Samuel Mulcahy.**



*Kurt Bosecke: Ancient Bushland of an Ancestral Glomuria*



Victor Harbor 5171

**10 Coral Street Victor Harbor**

### **Opening Hours**

9:00 am - 5:00 pm, 7 days a week

E: [arts@victor.sa.gov.au](mailto:arts@victor.sa.gov.au)

P: [\(08\) 8551 0781](tel:(08)85510781)

**CLAYTON BAY CHRONICLE – SUMMER 2022**



If you enjoy a good



# FILM

The Southern Fleurieu Film Society  
a non profit, membership community group

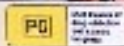
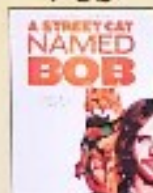
Has released its 2022 programme

To attend, membership information is available  
from the Southern Fleurieu Film Society website

[sffs.org.au](http://sffs.org.au)

Our first screening is on Feb. 4th. at the  
Milang Institute Supper Room  
and the first Friday of the month there after.

Feb



Mar



April



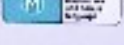
May



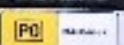
June



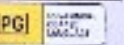
July



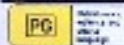
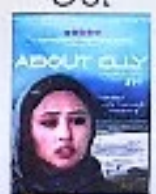
Aug



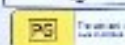
Sep



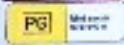
Oct



Nov



Dec



[sffs.org.au](http://sffs.org.au)

**Annual Membership only \$50**  
**\$25 if joining after June.**

Any enquiries contact John Bradford  
on 85 370067 or Michael Tye 0438 800 066  
or by emailing [mike@michaeltye.com.au](mailto:mike@michaeltye.com.au)



Clayton Bay Community Association

Committee 2021/22

President	Ginny Edgerley
Vice President/Hall Hire	Letho Kostoglou
Secretary	Peter Lomman
Treasurer Membership	Ingrid Owen
Committee member	Michael Daw
Committee member	Angie Daw
Alexandrina Council Rep	Karyn Bradford

Mobile: 0448 453 202

Like us on Facebook

[info@claytonbay.org.au](mailto:info@claytonbay.org.au)



## **The Carpet Doctor**

Cleaning, repairs & re-stretching

**Call Max 0409 692 003**

[www.thecarpetdoctor.com.au](http://www.thecarpetdoctor.com.au)

**Call Max 0409 692 003**





## CLAYTON BAY NURSERY & ENVIRONMENT GROUP

FEBRUARY 2022

Plant propagation continues at the nursery with direction from manager Phil Collins, including some changes in methods and materials. The plants are looking terrific at the moment thanks to the care of volunteers and the kinder than usual summer.

The plant orders for environmental projects are smaller than usual this year, allowing time to develop a range of hardy plants that do well in our climate including Australian, Mediterranean & other similar regions of the world. These as well as local species will be available over Easter at 'SA Open Garden' - Saturday & Sunday in Milang. Watch Facebook for details closer to Easter.

### ACACIA SALIGNA – golden wreath wattle

If you live in Clayton Bay and you don't know that *Acacia saligna* is a major weed, the you must be living under a rock. CBNEG has advertised information on this problem weed many times over the last 5 or more years, including recognition and control. Advice from the nursery and a small bottle of herbicide has and continues to be offered. *Acacia saligna* has been successfully removed from the foreshore trail area, but the weed continues to grow in streets and on private land, especially the estate around Terry Way and surrounds. CBNEG used a grant of \$10,000 to remove 1/3 of *Acacia saligna* and *Pinus halapensis* on the Terry Way Reserve, and planted 2,000 replacement plants, but the weedy trees continue to grow around the town.

### Why is it a problem?

It is a problem because it spreads from seed so easily, but more that it suckers along the roots if the tree is damaged or cut down without the use of chemical control (Garlon/Desiel 1:60)

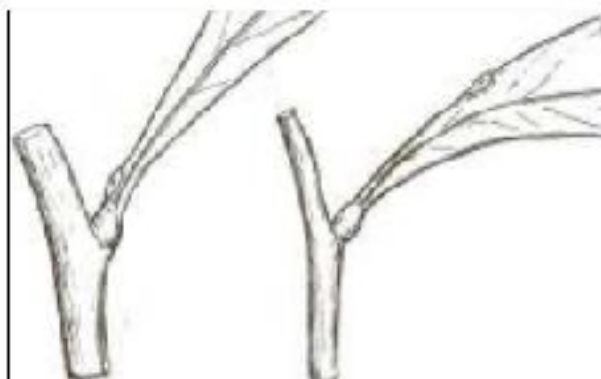


Diagram 1: Showing position of leaf gland at the base of the leaf of the weed Golden Wreath Wattle (left) and further up the leaf margin on local native species Golden Wattle and Limestone Wattle (right).

Many house blocks and Council land in that area are a forest of suckers making the area a major fire risk.





Photo 1: Golden Wreath Wattle on the side of the Finnis Clayton Road (photo C. Miles)

If you have this plant on your property, please remove them. If you need advice email, phone or call into the nursery Tuesday or Thursday.

CBNEG community nursery

claytonbayneg@gmail.com

0418 838 003

#### CBNEG PLANTS AT OPEN GARDENS SA

CBNEG nursery has been growing additional plants for an open garden in Milang in April. Plants will include local native plants as well as dry climate species from other parts of the Australia and overseas.

The open garden is part of Open Gardens SA, and will be on open on Saturday 16th & Sunday 17th April 10am – 4.30 pm at MARKCHRISMICK, 33 Stirling St Milang. The link will show you glimpses of this fabulous garden, and other details of the days.

<https://www.opengardensa.org.au/current-season/details/18/407>

#### Cleaner wanted

Are you receiving Centrelink Jobseeker payments and need to volunteer for something to fulfill your mutual obligation requirements?

The CBCA is currently looking for a cleaner to periodically clean the hall.

If you're interested please call the CBCA on Mobile: 0448 453 202 or email us [info@claytonbay.org.au](mailto:info@claytonbay.org.au)

## History of Clayton Bay

Prepared by Letho Kostoglou

### Ngarrindjeri History

The Ngarrindjeri peoples are the traditional Aboriginal Australian Owners of the lower Murray River, eastern Fleurieu Peninsula, and the Coorong in the southern-central region of the state of South Australia. The boundaries of the Ngarrindjeri nation extended from Cape Jervis to the River Murray at Murray Bridge then down to Kingston South.

There were within these boundaries some 18 Lakinyeri (tribes or clans) that made up the Ngarrindjeri nation and each clan had its own defined region which they called their own. Archaeological excavations conducted at Roonka Flat revealed that the traditional lands of the Ngarrindjeri have been inhabited since the Holocene period, beginning around 8,000 B.C. down to around 1840 CE.

For thousands of years, the Lower Murray, Lower Lakes and Coorong region was one of the most densely populated areas of Australia and land and waterways were home to thousands of Ngarrindjeri peoples. Ngarrindjeri lived in communities known as ruwe or rumar. Everything the Ngarrindjeri required for daily living be it clean waters, foods, medicines, shelter and warmth was located in this region. The Ngarrindjeri were not a nomadic people prior to European colonisation but occupied permanent settlements or villages each with a series of pathways linking villages. The Ngarrindjeri utilised at least 180 different kinds of plants and animals as food items. They smoked meat as well as fish, stored vegetables and seeds and kept live fish in enclosures for later use.

First contact with Europeans probably occurred between 1802 - 1819 through sealers and whalers who had established a permanent camp on Karta, Kangaroo Island. Many of them were escaped convicts who had brought Tasmanian Aboriginal women with them. However, they also kidnapped Ramindjeri women, forming part of the Kukabrak grouping of Ngarrindjeri located around Encounter Bay and Goolwa to whom they introduced venereal disease. In addition, two smallpox epidemics, swept down from the colony of New South Wales via the river Murray, had a devastating effect on the Ngarrindjeri population.

In 1836 the British crown drew up a document known as the Letters of Patent. This document from King William IV effectively authorised the colonisation of South Australia. It also recognised the rights of native peoples as British subjects and therefore expressly protected the traditional rights to land and resources to native peoples.

1 A Fresh History of the Lakes: Wellington to the Murray Mouth 1800's to 1935. Terry Sim and Kerri Muller

River Murray Catchment Water Management Board, 2004.

2 Ngarrindjeri Nation Yarluwar – Ruwe Plan Caring for Ngarrindjeri Sea Culture and Culture

Prepared on behalf of the Ngarrindjeri Nation by The Ngarrindjeri Tendi The Ngarrindjeri Heritage Committee

The Ngarrindjeri Native Title Management Committee Supported by the Ngarrindjeri Land and Progress

Association (Inc.) 2007

## **CLAYTON BAY FACTS FOR KIDS**

**\*THE NGARRINDJERI PEOPLES ARE THE ORIGINAL TRADITIONAL ABORIGINAL INHABITANTS OF CLAYTON BAY.**

**\*ON 3 NOVEMBER 1829 CAPTAIN CHARLES STURT LEFT SYDNEY TO TAKE COMMAND OF THE EXPEDITION THAT EVENTUALLY BECAME KNOWN AS THE FAMOUS "MURRAY RIVER VOYAGE".**

**\*THE TOWNSHIP OF CLAYTON WAS FIRST SURVEYED IN 1853.**

**\*CLAYTON IS SUPPOSED TO HAVE BEEN NAMED AFTER CLAYTON, A CONVICT CARPENTER WHO ACCOMPANIED STURT ON THE "MURRAY RIVER VOYAGE".**

**\*ANOTHER CLAIMANT TO THE NAMING OF THE TOWN WAS JOHN CLAYTON FREELING, FATHER OF ARTHUR FREELING.**

**\*THE TOWN OF CLAYTON WAS NAMED BY GOVERNOR MACDONNELL IN 1858.**

**\*BLOCKS OF LAND WERE FIRST OFFERED FOR SALE IN 1859.**

**\*THESE COULD BE PURCHASED IN THE AREA KNOWN AS "OLD CLAYTON".**

**\*IN 1969 THE CLAYTON SUBDIVISION WAS ESTABLISHED.**

**\*CLAYTON BAY WAS RENAMED FROM CLAYTON IN 2008 AS IT WAS GETTING CONFUSED WITH CLAYTON, A TOWN IN VICTORIA.**



## Strathalbyn Citizen of the Year 2022

### Mary Wilson

We were proud of our Mum before and even more so now knowing that our community has recognised her for the love she poured into her local town thanks to my sister Robyn doing all the leg work and bringing our Mum's story to us all.

Mother arrived in the little town of Strathalbyn as a 16-year-old city girl to start her nursing career. It must have felt like the outback to her in the 1940's! She tells a story of having to run from the Hospital to the Post Office while on night shift to wake a sleeping boy so a phone call could be made to raise the Doctor! How times have changed! Our Father (Allen Wilson) was a patient sometime later in the Hospital. Mother told me she thought he was quite a dish!! and just had to go and look up his files! Father was one of the first students at the Ashbourne School.

Mum and Dad were married in 1950 so "paid" work stopped for our Mum and they raised five girls on the farm at "Summerhill". I imagine that would've been enough work for anyone. However, our Mum fitted in 60 plus years of volunteering as well!! Church of England, Women's Church Auxiliary, Mothers and Babies Health Association, raised funds for their building being built in the 1950's (still there today). She also was involved with the Women's Auxiliary for the Strathalbyn Hospital (30 years), Strathalbyn Saleyards feeding lunches to farmers (63 years), Hospital visiting, Meals on Wheels (25 years), Hospital Opportunity Shop (12 years) and Hospital Board (12 years). Our Mum is now 98 years old! She has a happy outlook on life. She said to me recently she could've made a whole ward full of beds the same time it takes her to make her own bed now but still laughs about it! I told her she was way ahead of me as I hadn't made my bed by 8.45am! Take time to get to know your parents' stories. Spend time over a cuppa or the phone... you could well be amazed as to what comes out. I'm lucky I still have my Mum. We are good mates, share our stories both good and bad. I just love her to bits. I count my blessings every day.

Sandy Mulcahy (nee Wilson)



### Cathy Fish (Trebilcock)

Some of you may know me as either Cathy Fish or sometimes as Cathy Trebilcock (that is just to confuse everyone)!!! Generally, I use Cathy Trebilcock which is my maiden name for any artwork that I do, whereas Cathy Fish is technically my legal name, don't worry I even confuse myself at times.

I have been coming to Clayton Bay for about 19 years and have been living here permanently for nearly 9 years and loving it. Currently I am a volunteer at MOSHCC in Milang where I am the editor of the Milang Community News (MCN) and I am also a committee member of the Milang & District Community Association (MADCA).



Being editor of the MCN allows me to use my technical skills while at the same time using my creative skills working on the layout of the publication and I am also learning a lot about the town and the history of the area. If anyone has an interesting story they would like to share, or an event that they would like to advertise or even just a 'Letter to the Editor' please feel free to drop me an email via [editor@milang.org.au](mailto:editor@milang.org.au).

In addition to my volunteer work, I really enjoy making fused glass art, doing mosaic work and also, I love making handmade lamp work glass beads while also enjoying doing crochet and patchwork. I certainly keep myself busy.



**Clayton Bay**  
riverside holiday park  
... a hidden gem

**Nestled on the shores of a picturesque bay, surrounded by trees and abundant birdlife, Clayton Bay Riverside Holiday Park is a tranquil, relaxing tourist destination.**

<b>Accommodation options</b>	<b>Contact Danny and Claire</b>
◆ Powered sites	Tel: 08 8537 0372
◆ Unpowered sites	Email: <a href="mailto:info@claytonbayrhp.com.au">info@claytonbayrhp.com.au</a>
◆ Retro onsite vans	Website: <a href="http://www.claytonbayrhp.com.au">www.claytonbayrhp.com.au</a>
◆ Luxury Boatman's Cabin	 <b>Island View Drive, Clayton Bay SA 5256</b>



# Clayton Bay Earthworks

General earthworks, driveways, site laser leveling, trenching, block slashing, postholes to 600mm diameter, hydraulic rock breaker, tree and stump removal

We have the following equipment in Clayton Bay ready to service your requirements.

3 ton excavator with numerous attachments, bobcat, 35 hp tractor with industrial slasher, 4 ton tip truck, ditchwitch trenching machine.

Bulk soil, road base, gravel, and land fill supplies can be organized at competitive rates

Tim and Linda Roberts

**0419 038 499**

ABN: 92 577 965 937



## WINE FUNDRAISER



Example of the wines available are:

- Winery Road Brut Cuvée
- Winery Road Sauvignon Blanc
- Steeple Jack Moscato
- Steeple Jack Shiraz
- Winery Road Shiraz Cabernet

Cost per Dozen is \$96.00—That's \$8.00 per bottle!

*Orders can be 6 bottles of 2 varieties!*

Your order will be delivered FREE to any Clayton Bay address

**ORDER NOW! 0407 394 907**

**This is one way you can support the Clayton Bay Community Association's fundraising.**

## Coming Soon to Clayton Bay March 2022

Clayton Bay's very own café hot food van

*'By the Bay'*



Find us on facebook - By the Bay, Clayton Bay

## Clayton Bay's Chronicle Composer of the Month.

George Friedrich Handel (1685 – 1759) By Letho Kostoglou

Handel was born on February 23<sup>rd</sup> 1685 in the city of Halle Germany. His father, a barber- surgeon, disapproved of his son learning music but his mother encouraged him by smuggling a portable keyboard instrument into the attic. As a child, Handel played the organ at the Cathedral in Halle where the Duke of Saxe-Weissenfels attended. The Duke later made financial contributions allowing Handel to study with the Cathedral's master organist.



By 1703, Handel was an accomplished organist and violinist and he auditioned for the orchestra of the Hamburg Opera House. There he learned how to write for the human voice in particular, opera. In 1704 Handel fought a duel with the composer Johann Mattheson (28 September 1681 – 17 April 1764) a close friend of Handel's. Fortunately for Handel and the musical world Mattheson's sword only struck a button on Handel's waistcoat. To perfect his composition of Italian opera he travelled to Florence in Italy, then Venice, Milan and Rome. He later settled in London, England where he composed Italian Operas, Oratorios and ran three opera companies. He also became the first director of the newly founded *Academy of Music* in London, that is still in operation today and was one of the first impresarios in music history.

Running opera companies then was a precarious business, especially companies that presented operas written in Italian. There was no copyright then, so rivals could steal music written by say Handel and have it published, performed and keep all the profits. Handel nearly went broke when John Gay, an English composer wrote the *Beggars Opera* and opera in English set to music with themes taken from popular folk songs. Opera singers or prima Donnas, first ladies, also challenged Handel. One in particular, Francesca Cuzzoni, refused to sing an aria Handel had written. Handel, infuriated, likened her to a devil but likened himself to Beelzebub, chief of all the devils and if she would not sing the aria, he would throw her out of the window! Needless to say, she sang the aria which made the opera a huge success and made Handel a lot of money.

Handel is perhaps most famous for his four *Coronation Anthems* written for and played at the coronation of King George II in 1727 and his oratorio *Messiah* which depicts the life of Christ. By the mid 1730's public opinion to Italian opera was waning and Handel, aware of public attitude, looked to the oratorio as a way of recapturing the public's musical imagination. *Messiah* was written in 1741 and completed in 24 days! The first performance took place on April 13 1742 in a theatre in Dublin Ireland. In 1750 *Messiah* was heard in London as a charity fundraiser for the Foundling hospital, an institution that housed and educated abandoned children. Annual performances of *Messiah* continued to be performed as fund raisers for the hospital until Handel's death and beyond. Handel lived a further 18 years after writing *Messiah*. His eyesight was failing and he underwent an eye operation in an attempt to correct his vision. It failed and he became totally blind at the time of his death on April 14 1759.

CLAYTON BAY CHRONICLE – SUMMER 2022



## 2022 Calendar Launch

On 1st December last year the CBCA Inc, in conjunction with community members, held the 2022 Calendar Launch event that took place in the grounds of the Clayton Bay Community Hall adjacent to the Clayton Bay Postal Agency. Ginny Edgerley, the newly appointed president of the CBCA, officially launched and unveiled the 2022 calendar before handing the microphone over to Margaret Heathcote who organised and put the calendar together at very short notice. Some twenty to twenty-five members of the community actively participated in the launch of the 2022 calendar, which features beautiful photos of native birds and wildlife taken by local ornithologist Andrew Crouch and Margaret Heathcote. A special thanks to Margaret for taking on the job of putting together the calendar together and Andrew Crouch for providing photos and also to all those people in our community who attended and purchased calendars.

If you'd like to purchase a 2022 calendar, copies are available at either the Clayton Bay Postal Agency or the Clayton Bay Riverside Holiday Park. One calendar costs \$ 8:00 or three calendars cost \$ 20:00. All proceeds go to the Clayton Bay Community Association Inc.

